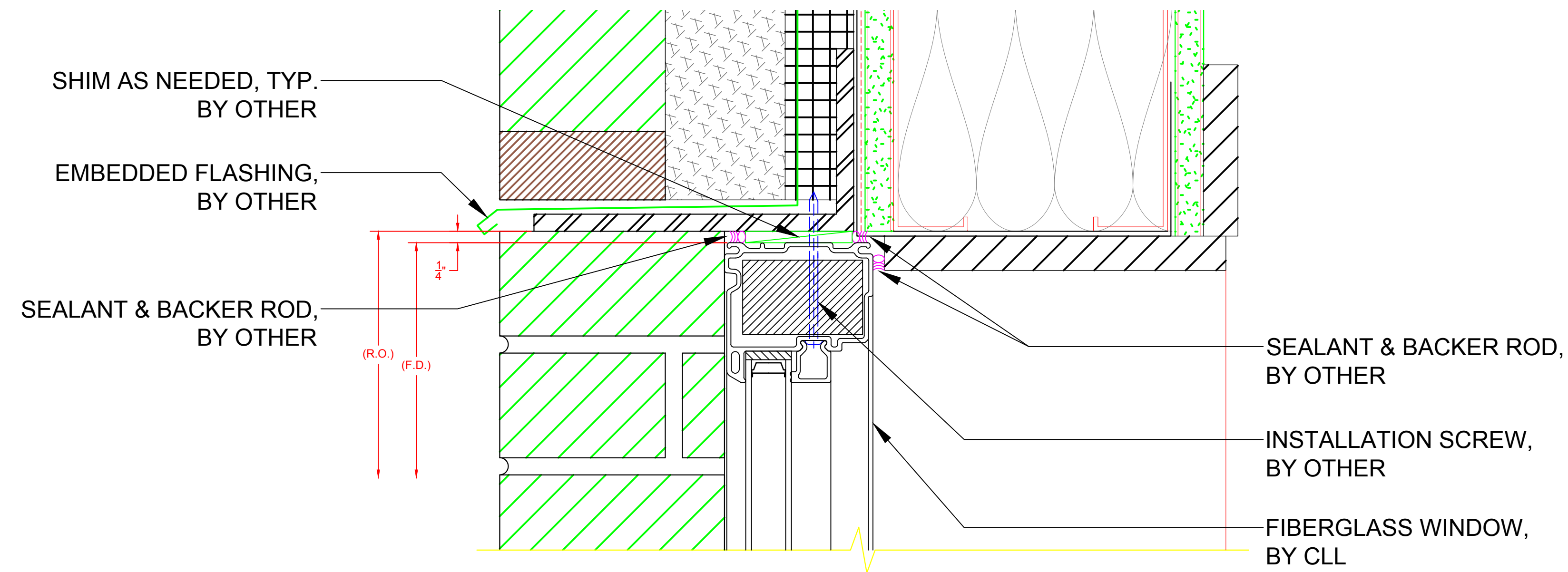


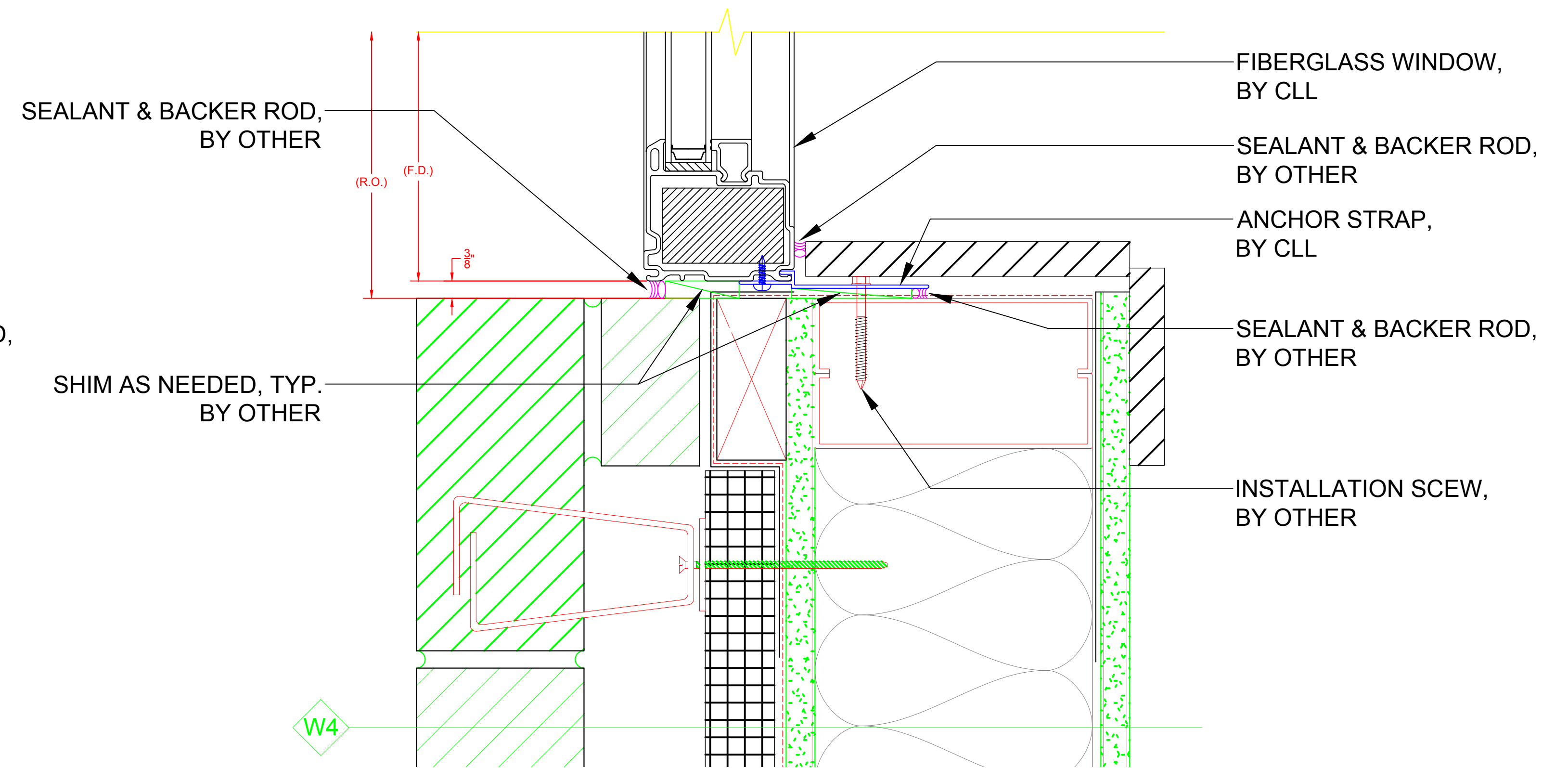
2100 SERIES PICTURE

(INSTALLATION METHODS)



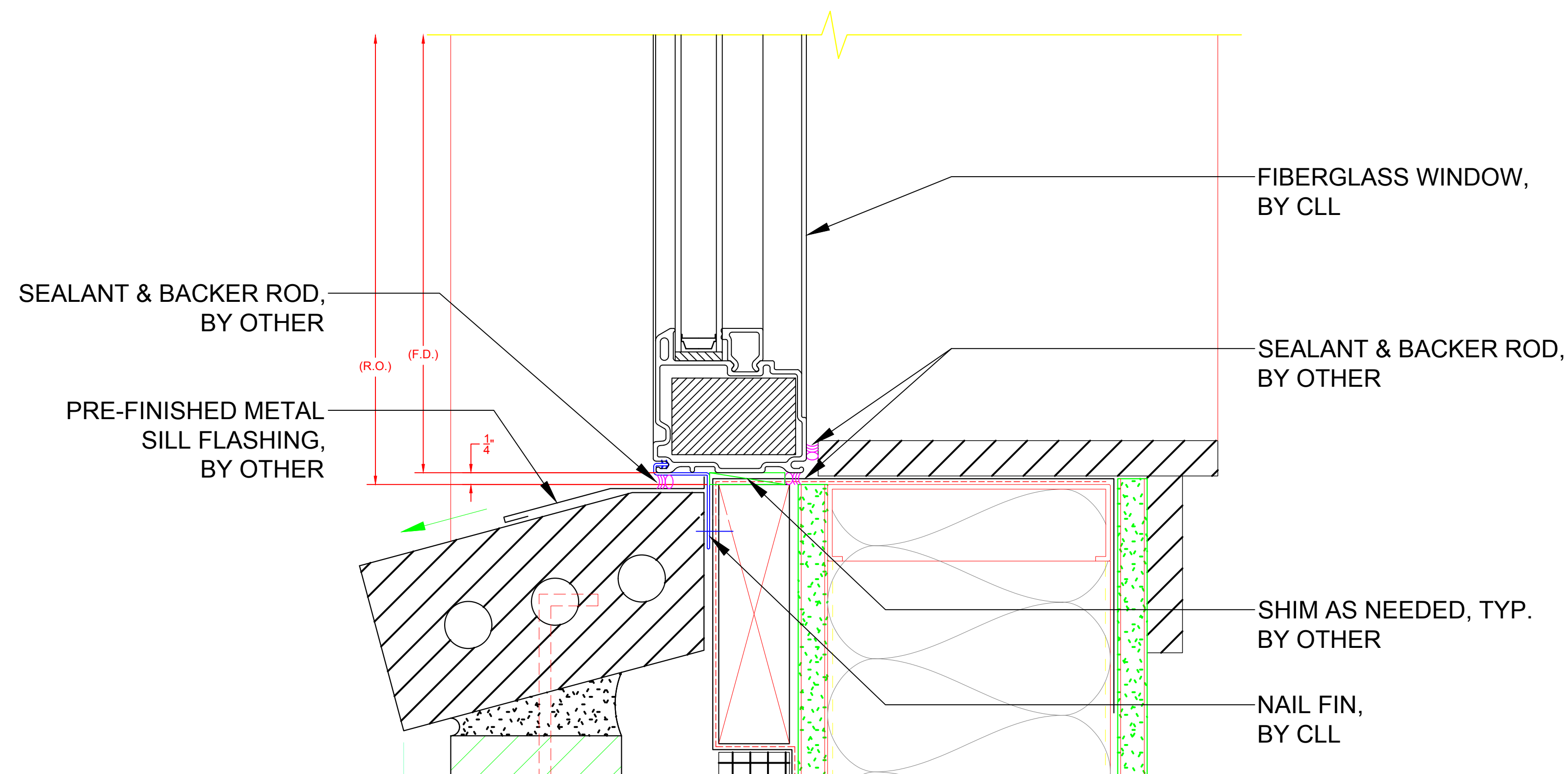
**HEAD DETAIL - 2100 PICTURE WINDOW
(W/ INSTALL THROUGH FRAME)**

H1



**JAMB DETAIL - 2100 PICTURE WINDOW
(W/ ANCHOR STRAP)**

J1




**SILL DETAIL - 2100 PICTURE WINDOW
(W/ RIGID NAIL FIN)**

S1

*** NOTE:**

- ALL DRAWINGS ARE FOR REFERENCE PURPOSES ONLY
- ACTUAL INSTALLATION, FASTENERS, ETC. MAY VARY
- AVB & SEALANT BY OTHER, PER LOCAL & INTERNATIONAL BUILDING CODES
- ALL INSTALLATION SCREWS GOING INTO R.O. ARE BY OTHER
- ALL SHIMS ARE BY OTHER

SEE PRODUCT SPECIFICATIONS PAGE FOR COMPLETE PRODUCT DESCRIPTION.

SERIES/CONFIGURATION: 2100 SERIES PICTURE WINDOW		 COMFORT LINE LTD. 5500 ENTERPRISE BLVD. TOLEDO, OH 43612 419-729-8520
DRAWING TYPE: INSTALLATION EXAMPLES		
THIS DRAWING IS THE PROPERTY OF COMFORT LINE LTD. DESIGN CONCEPTS AND INFORMATION MAY NOT BE REPRODUCED USED OR DISCLOSED WITHOUT THE WRITTEN PERMISSION OF COMFORT LINE LTD.		
		PROJECT: 2100 PICTURE
		SCALE: 6" = 1' - 0"
		DATE: 2/13/17
DATE	REVISION	BY
		DRAWN BY: AJL
		QUOTE: ####
		SHEET: PW5