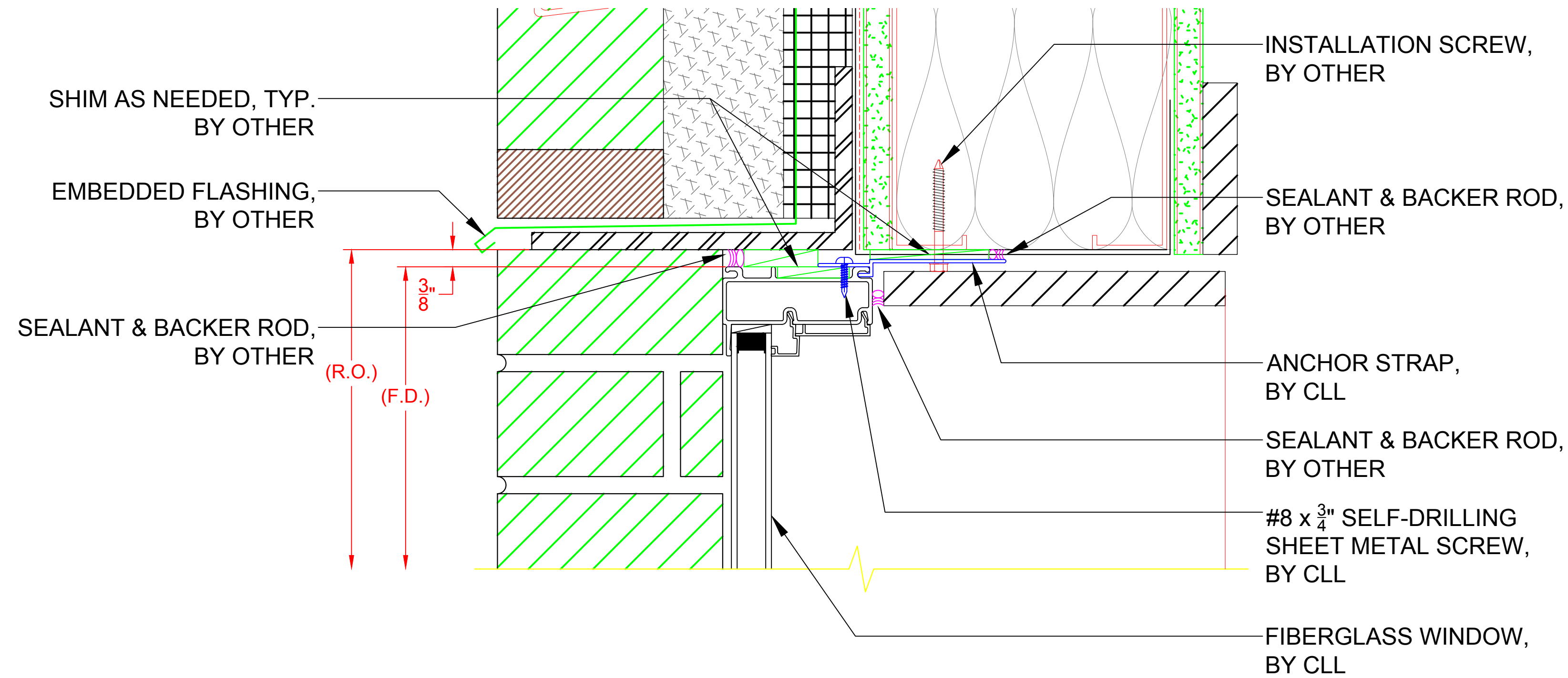


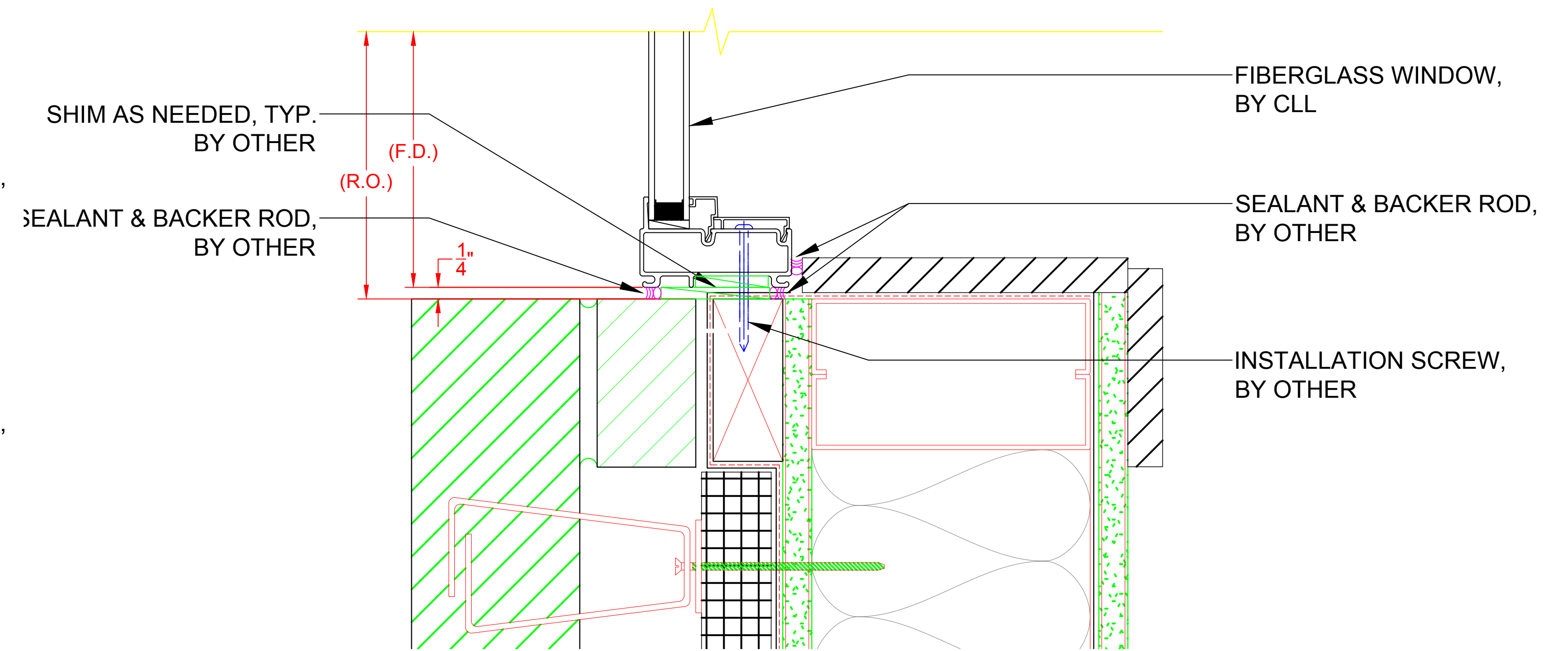
6500 SERIES PICTURE

(INSTALLATION METHODS)



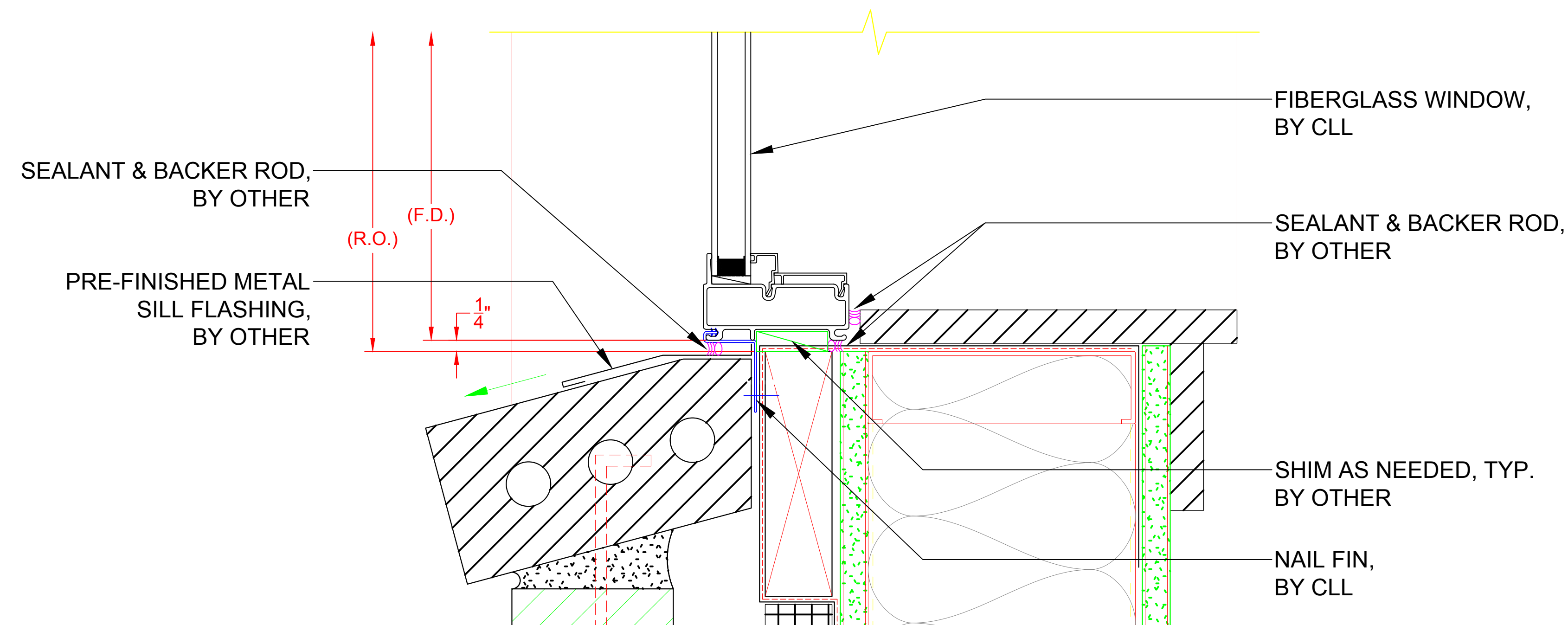
**HEAD DETAIL - 6500 PICTURE WINDOW
(W/ ANCHOR STRAP)**

H1



**JAMB DETAIL - 6500 PICTURE WINDOW
(W/ INSTALL THROUGH FRAME)**

J1




**SILL DETAIL - 6500 PICTURE WINDOW
(W/ RIGID NAIL FIN)**

S1

*** NOTE:**

- ALL DRAWINGS ARE FOR REFERENCE PURPOSES ONLY
- ACTUAL INSTALLATION, FASTENERS, ETC. MAY VARY
- AVB & SEALANT BY OTHER, PER LOCAL & INTERNATIONAL BUILDING CODES
- ALL INSTALLATION SCREWS GOING INTO R.O. ARE BY OTHER
- ALL SHIMS ARE BY OTHER

SEE PRODUCT SPECIFICATIONS PAGE FOR COMPLETE PRODUCT DESCRIPTION.

SERIES/CONFIGURATION: 6500 SERIES PICTURE WINDOW		 FiberFrame™ Comfort Line® <small>FIBERGLASS WINDOWS, PATIO DOORS, SUNROOMS & STOREFRONT</small>	COMFORT LINE LTD. 5500 ENTERPRISE BLVD. TOLEDO, OH 43612 419-729-8520		
DRAWING TYPE: INSTALLATION EXAMPLES			THIS DRAWING IS THE PROPERTY OF COMFORT LINE LTD. DESIGN CONCEPTS AND INFORMATION MAY NOT BE REPRODUCED USED OR DISCLOSED WITHOUT THE WRITTEN PERMISSION OF COMFORT LINE LTD.		
		SCALE:	6" = 1' - 0"	PROJECT:	6500 PICTURE
		DATE:	2/13/17	QUOTE:	####
DATE	REVISION	BY	DRAWN BY:	AJL	SHEET: SPW5