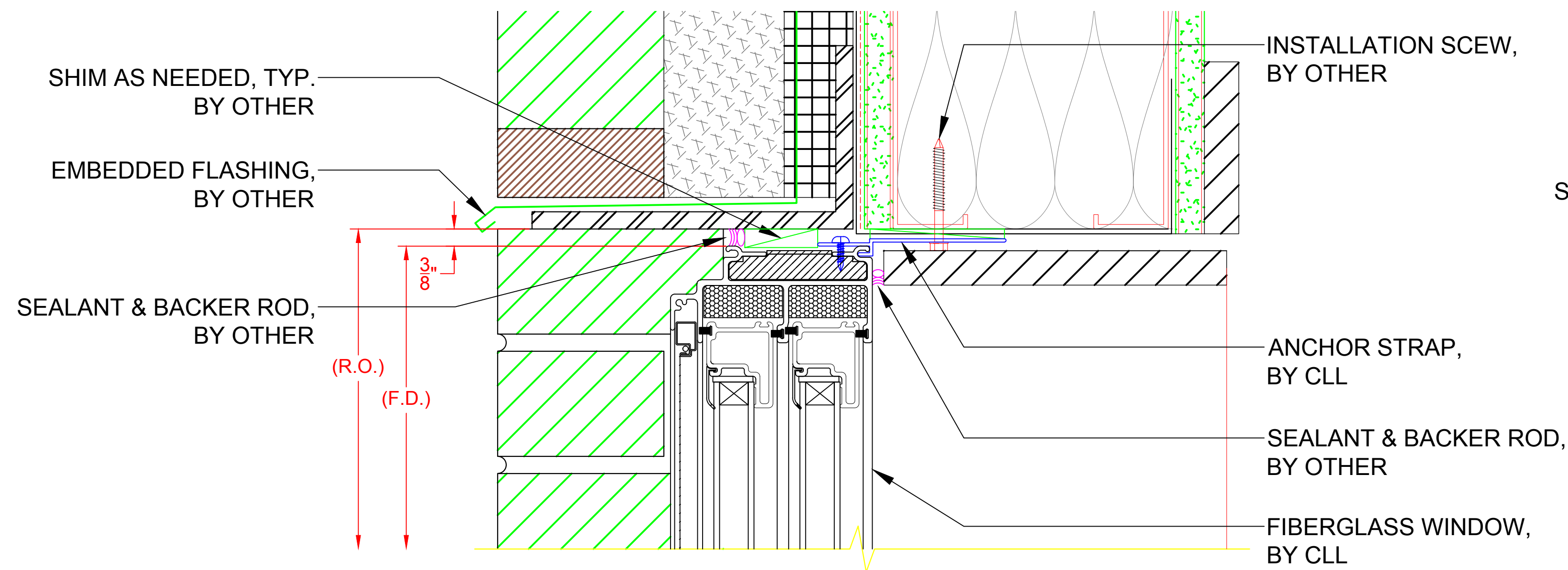


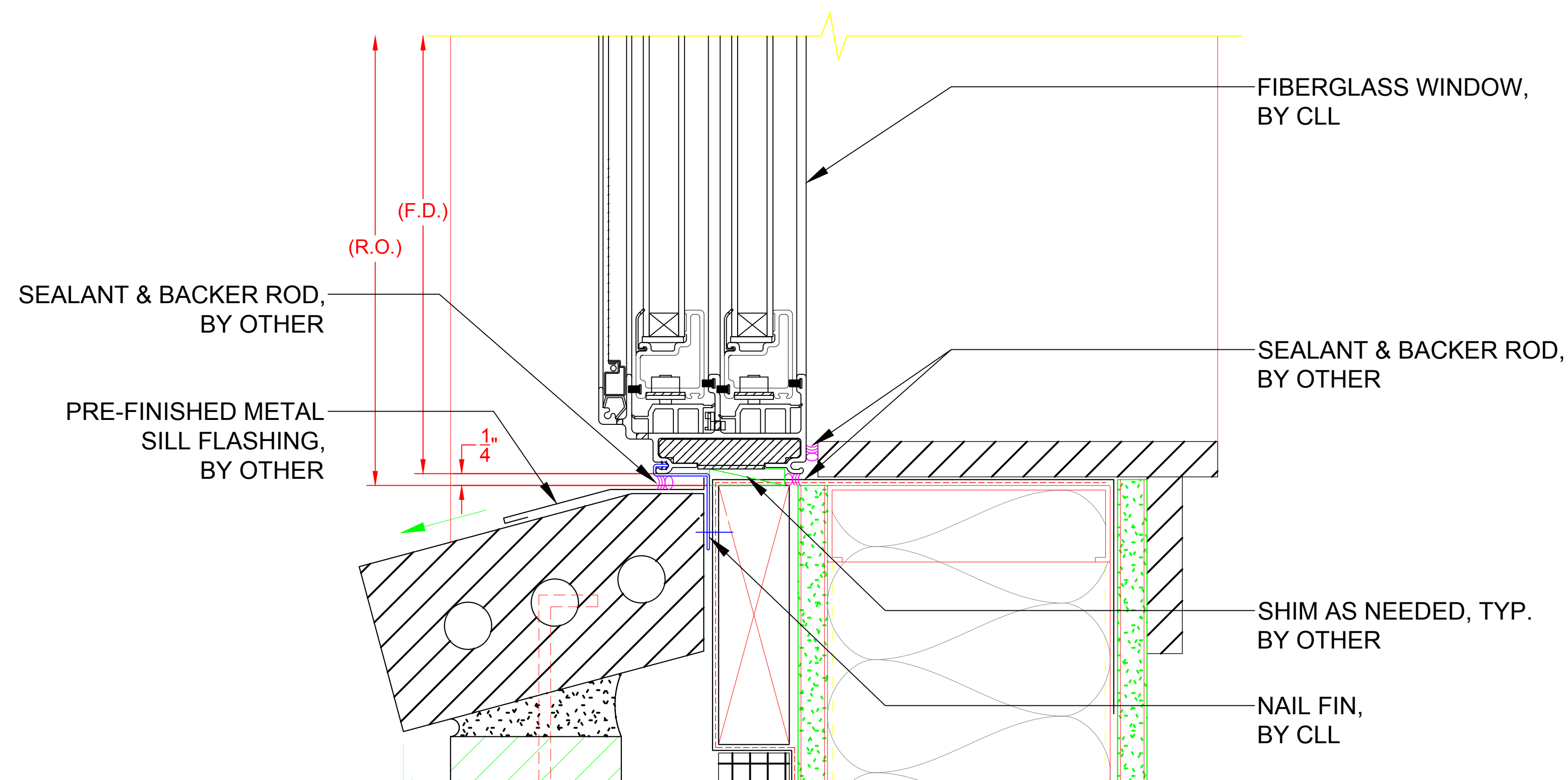
8000 SERIES SLIDER

(INSTALLATION METHODS)



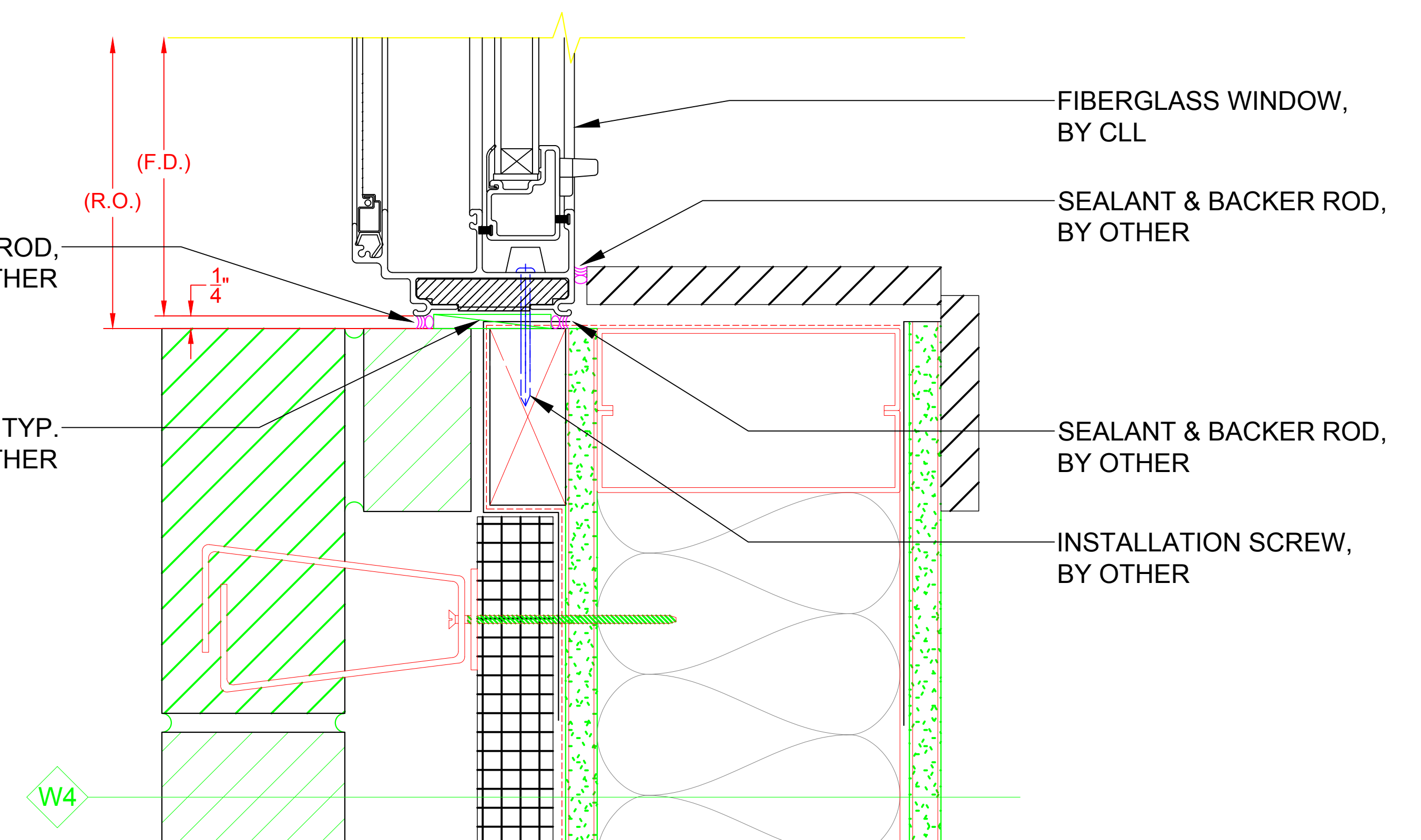
**HEAD DETAIL - 8000 SLIDER WINDOW
(W/ INSTALL THROUGH FRAME)**

H1



**SILL DETAIL - 8000 SLIDER WINDOW
(W/ RIGID NAIL FIN)**

S1




**JAMB DETAIL - 8000 SLIDER WINDOW
(W/ ANCHOR STRAP)**

J1

*** NOTE:**

- ALL DRAWINGS ARE FOR REFERENCE PURPOSES ONLY
- ACTUAL INSTALLATION, FASTENERS, ETC. MAY VARY
- AVB & SEALANT BY OTHER, PER LOCAL & INTERNATIONAL BUILDING CODES
- ALL INSTALLATION SCREWS GOING INTO R.O. ARE BY OTHER
- ALL SHIMS ARE BY OTHER

SEE PRODUCT SPECIFICATIONS PAGE FOR COMPLETE PRODUCT DESCRIPTION.

SERIES/CONFIGURATION: 8000 SERIES SLIDER			 COMFORT LINE LTD. 5500 ENTERPRISE BLVD. TOLEDO, OH 43612 419-729-8520
DRAWING TYPE: INSTALLATION EXAMPLES			
THIS DRAWING IS THE PROPERTY OF COMFORT LINE LTD. DESIGN CONCEPTS AND INFORMATION MAY NOT BE REPRODUCED USED OR DISCLOSED WITHOUT THE WRITTEN PERMISSION OF COMFORT LINE LTD.			PROJECT: 8000 SLIDER
			SCALE: 6" = 1' - 0"
DATE	REVISION	BY	DATE: 2/13/17 QUOTE: #### DRAWN BY: AJL SHEET: SL5