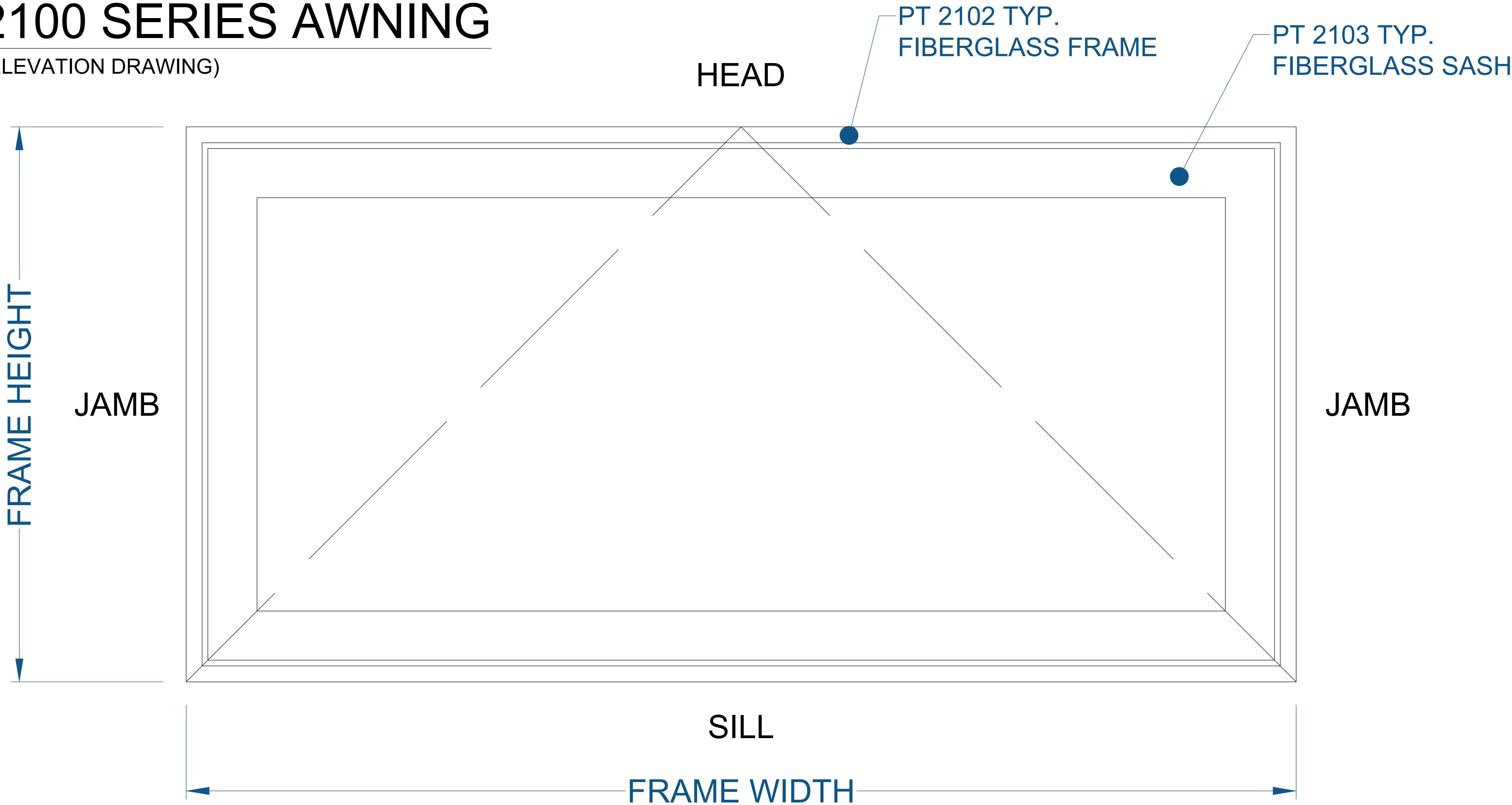


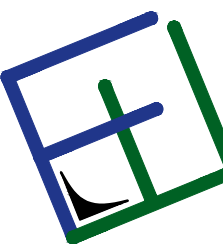
2100 SERIES AWNING

(ELEVATION DRAWING)



NOTE: ELEVATION VIEWED FROM THE OUTSIDE LOOKING IN.

SEE PRODUCT SPECIFICATIONS PAGE FOR COMPLETE PRODUCT DESCRIPTION.

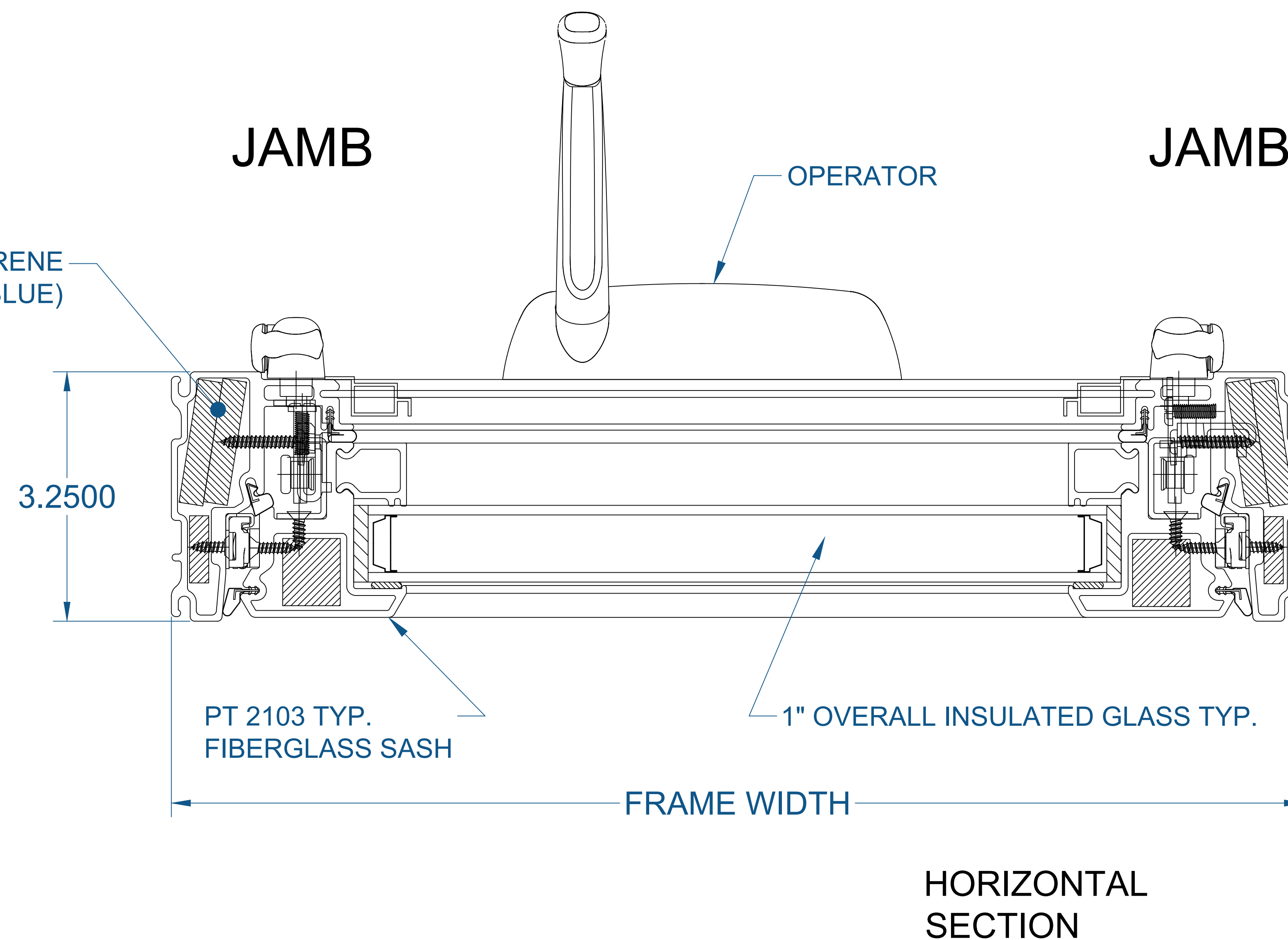
| | | | | | |
|-----------------------|----------|----|--|--|------------|
| SERIES/CONFIGURATION: | | |  <div>FiberFrame™ Comfort Line® <small>FIBERGLASS WINDOWS, PATIO DOORS, SUNROOMS & STOREFRONT</small></div> | COMFORT LINE LTD. 5500 ENTERPRISE BLVD. TOLEDO, OH 43612 419-729-8520 | |
| DRAWING TYPE: | | | | | |
| ELEVATION DRAWING | | | THIS DRAWING IS THE PROPERTY OF COMFORT LINE LTD. DESIGN CONCEPTS AND INFORMATION MAY NOT BE REPRODUCED USED OR DISCLOSED WITHOUT THE WRITTEN PERMISSION OF COMFORT LINE LTD. | | |
| | | | | | |
| | | | PROJECT: 2100 AWNING | | |
| | | | SCALE: 6" = 1' - 0" | | |
| | | | DATE: 2/13/17 | | |
| DATE | REVISION | BY | QUOTE: #### | | SHEET: AW1 |
| DRAWN BY: AJL | | | | | |

(SECTION PROFILE)

Technical drawing showing a vertical section of a window frame assembly. The drawing includes the following components and dimensions:

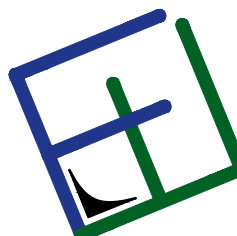
- FRAME HEIGHT**: Indicated by a vertical dimension line on the left side.
- PT 2102 TYP. FIBERGLASS FRAME**: Points to the upper frame section.
- PT 2112 TYP. ABS GLAZING BEAD**: Points to the glazing bead on the upper frame.
- LOCK HANDLE**: Points to the handle mechanism on the right side.
- VERTICAL SECTION**: Labeled on the right side of the drawing.
- 3.0625**: Dimension indicating the height of the lower frame section.
- 1.2090**: Dimension indicating the height of the sill section.
- SILL**: Labeled at the bottom right of the drawing.

JAMB



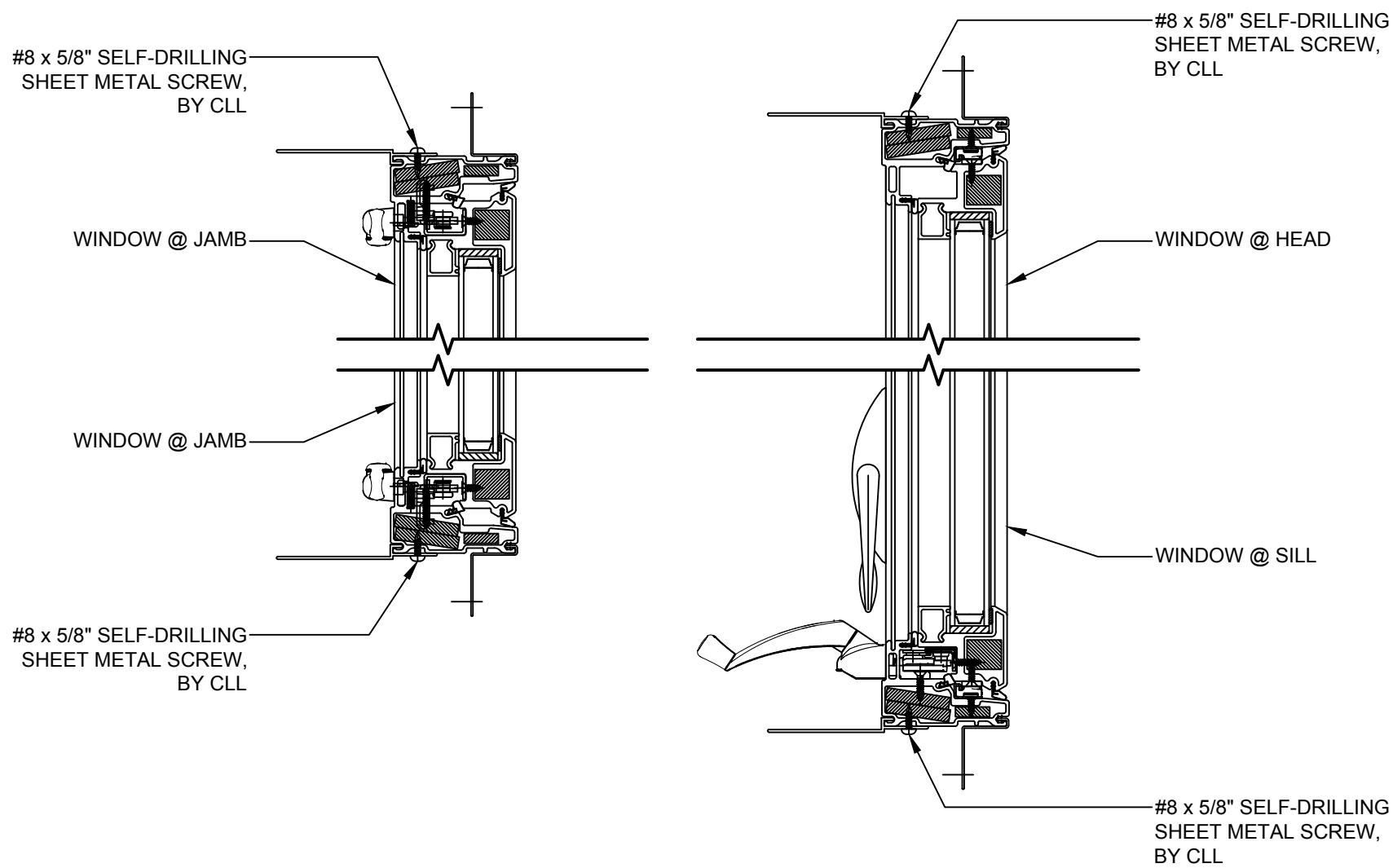
NOTE: OPERATION VIEWED FROM THE OUTSIDE LOOKING IN.

SEE PRODUCT SPECIFICATIONS PAGE FOR COMPLETE PRODUCT DESCRIPTION.

| | | | | | | | |
|---|----------|----|---|--|------------------------|-------------------------|-------------------|
| SERIES/CONFIGURATION: 2100 SERIES AWNING | | |  <div>FiberFrame™ Comfort Line® <small>FIBERGLASS WINDOWS, PATIO DOORS, SUNROOMS & STOREFRONT</small></div> | COMFORT LINE LTD. 5500 ENTERPRISE BLVD. TOLEDO, OH 43612 419-729-8520 | | | |
| DRAWING TYPE: DETAIL WINDOW PROFILES | | | | THIS DRAWING IS THE PROPERTY OF COMFORT LINE LTD. DESIGN CONCEPTS AND INFORMATION MAY NOT BE REPRODUCED USED OR DISCLOSED WITHOUT THE WRITTEN PERMISSION OF COMFORT LINE LTD. | | | |
| | | | | | | | |
| | | | | | | | |
| | | | SCALE: DATE: | 1' - 0" = 1' - 0" 2/13/17 | PROJECT: QUOTE: | 2100 AWNING #### | SHEET: AW2 |
| DATE | REVISION | BY | DRAWN BY: AJL | | | | |

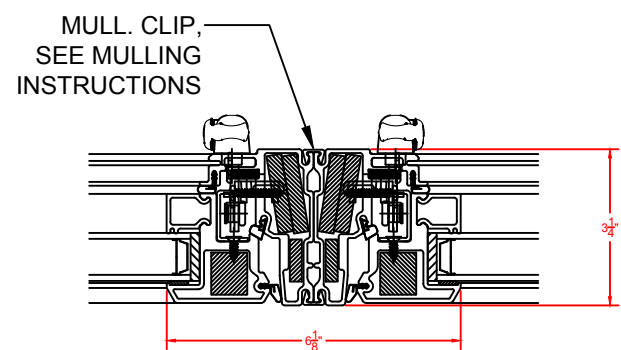
2100 SERIES AWNING

(SERIES OVERVIEW)

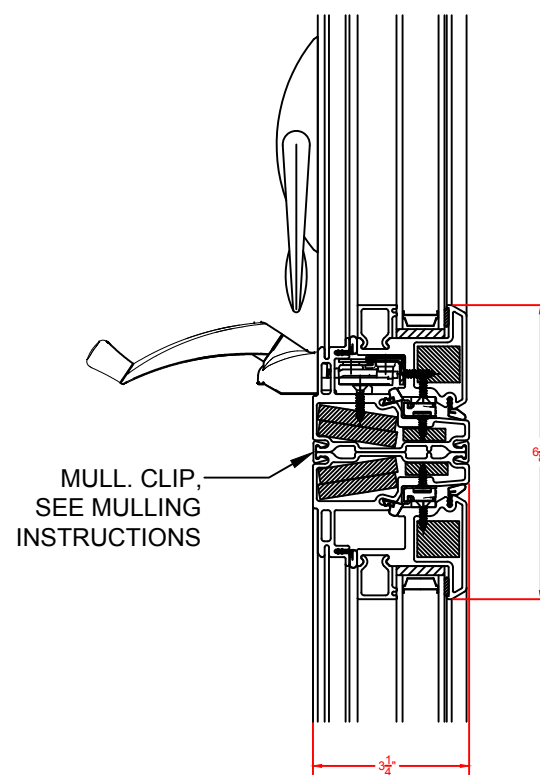


2100 SERIES AWNING WINDOW PROFILE W/
RIGID NAIL FIN & ANCHOR STRAP (BY CLL)

#8 x 5/8" SELF-DRILLING SHEET METAL SCREW @ ANCHOR STRAP (BY CLL)



MULL. DETAIL - AWNING / AWNING - TYP.
VERTICAL MULLS

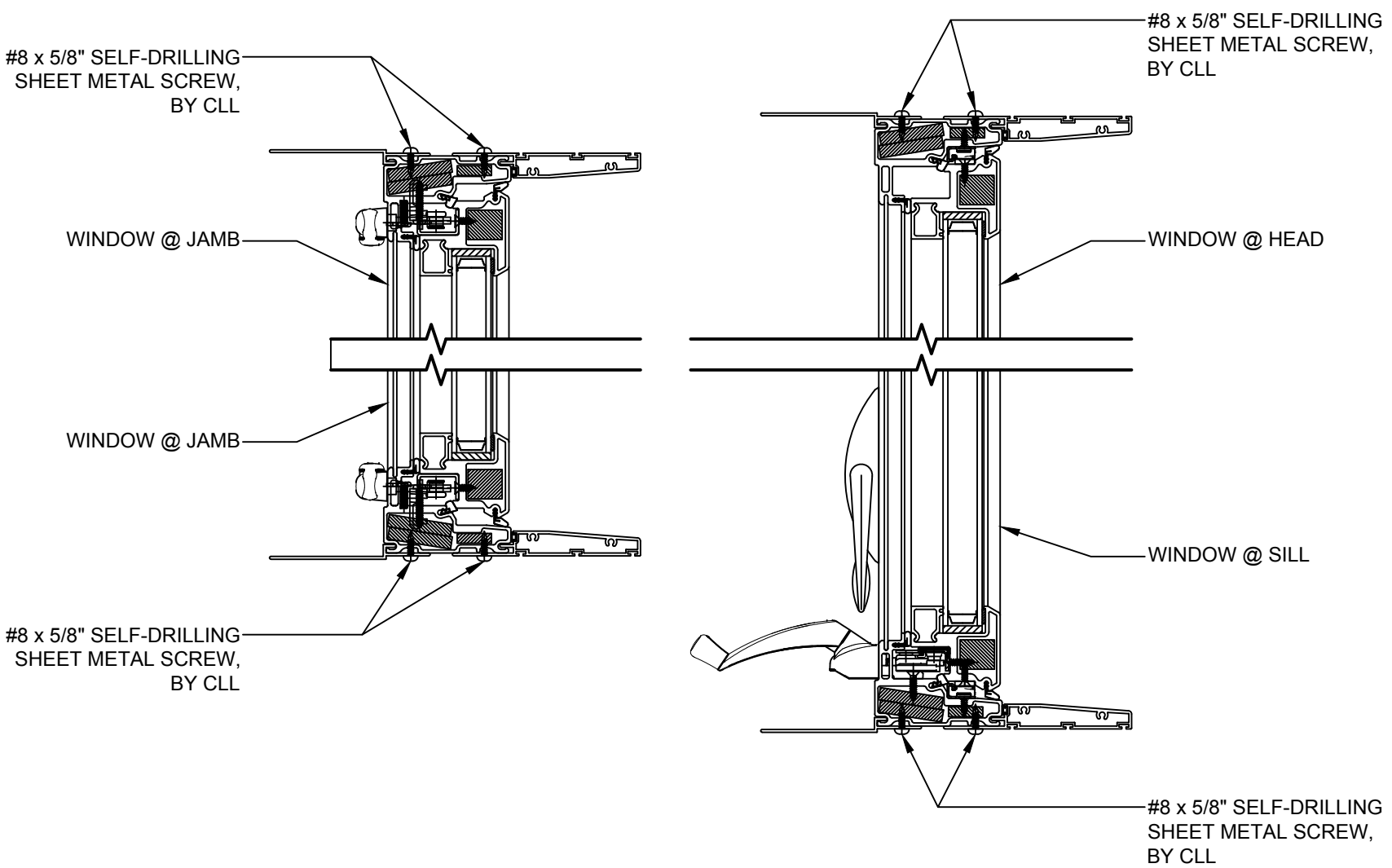


MULL. DETAIL - AWNING / AWNING - TYP.
HORIZONTAL MULLS

* NOTE:

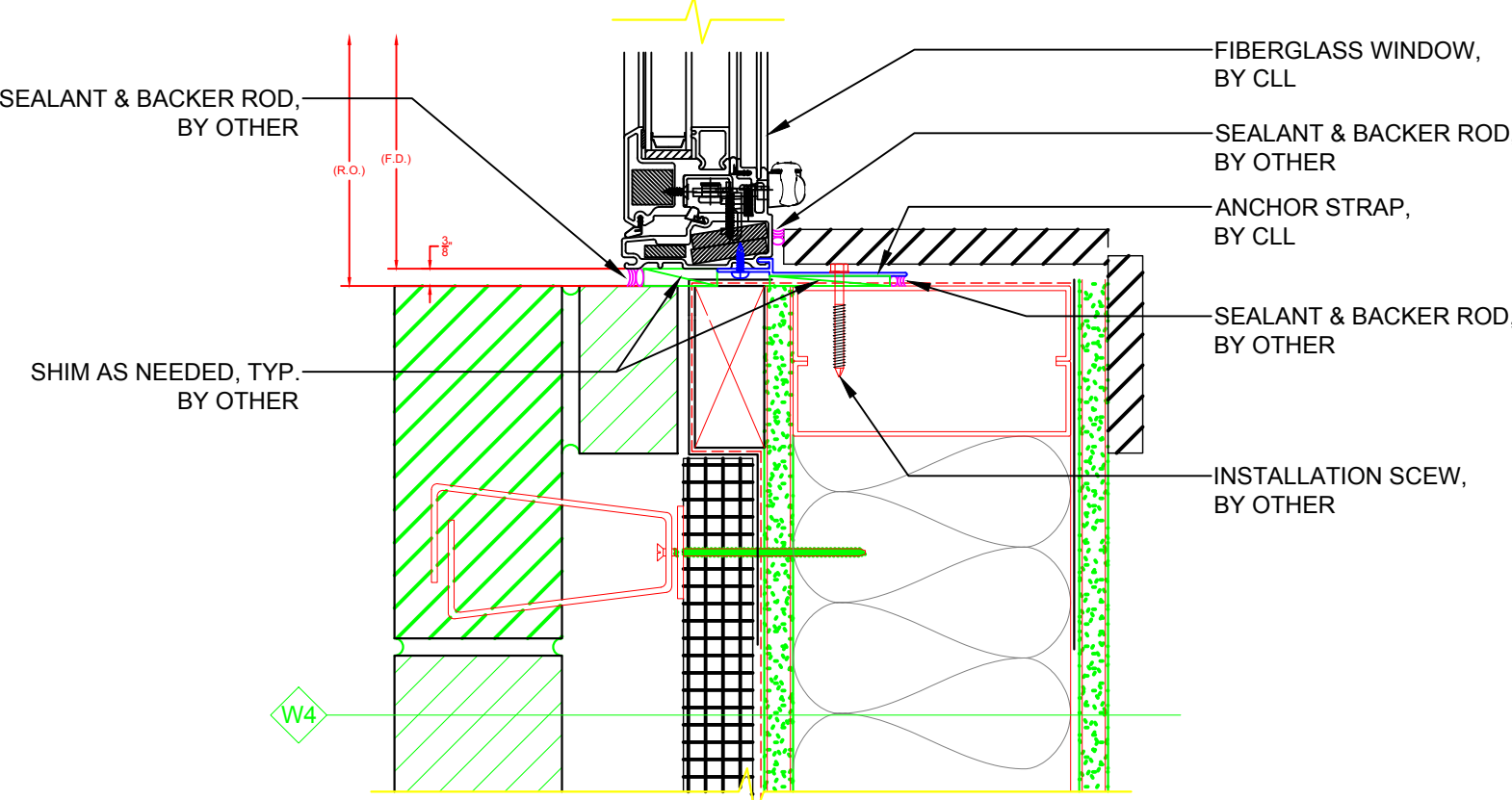
- ALL DRAWINGS ARE FOR REFERENCE PURPOSES ONLY
- ACTUAL INSTALLATION, FASTENERS, ETC. MAY VARY
- AVB & SEALANT BY OTHER, PER LOCAL & INTERNATIONAL BUILDING CODES
- ALL INSTALLATION SCREWS GOING INTO R.O. ARE BY OTHER
- ALL SHIMS ARE BY OTHER

SEE PRODUCT SPECIFICATIONS PAGE FOR COMPLETE PRODUCT DESCRIPTION.

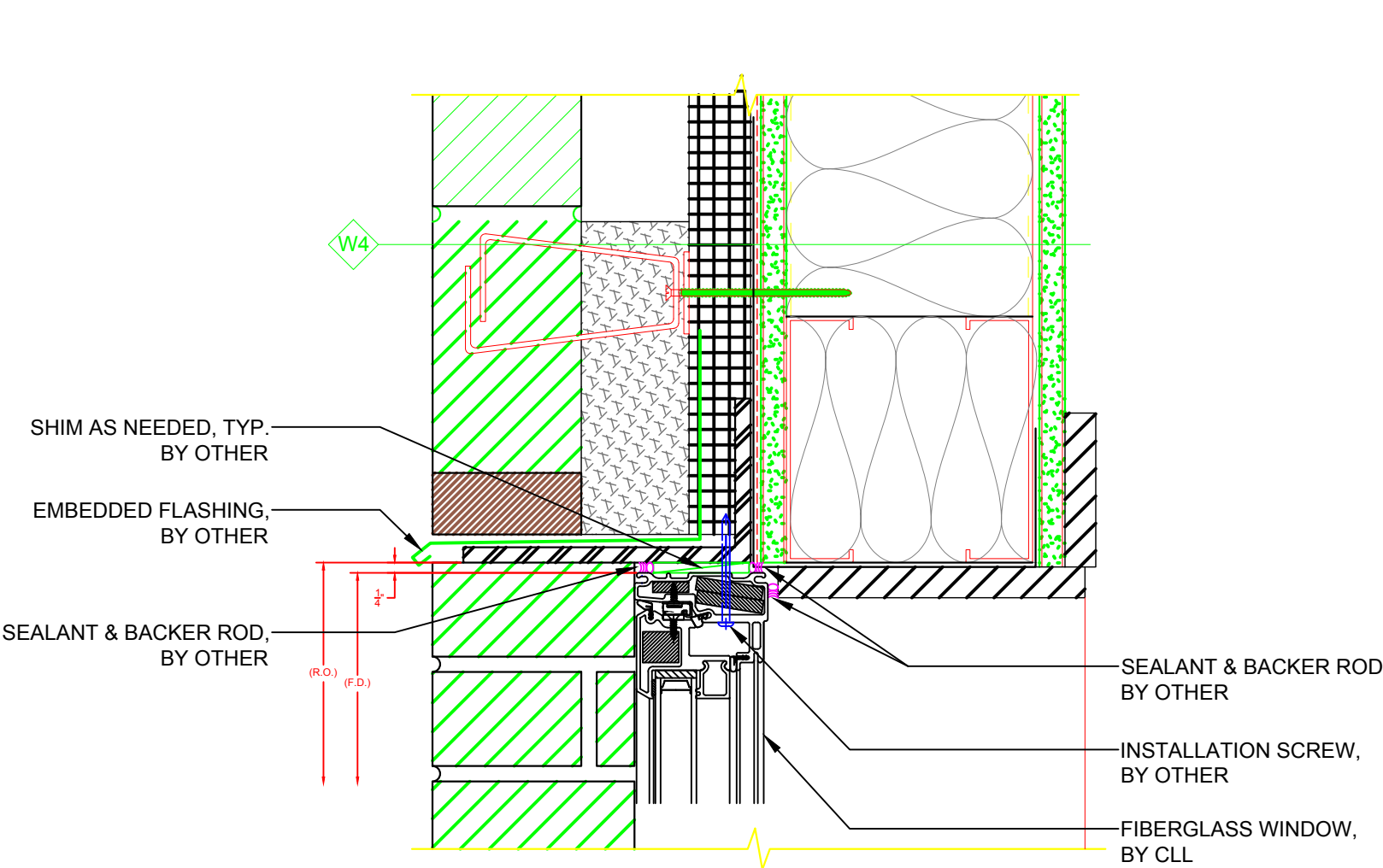


2100 SERIES AWNING WINDOW PROFILE W/
3 1/4" PANNING & ANCHOR STRAP (BY CLL)

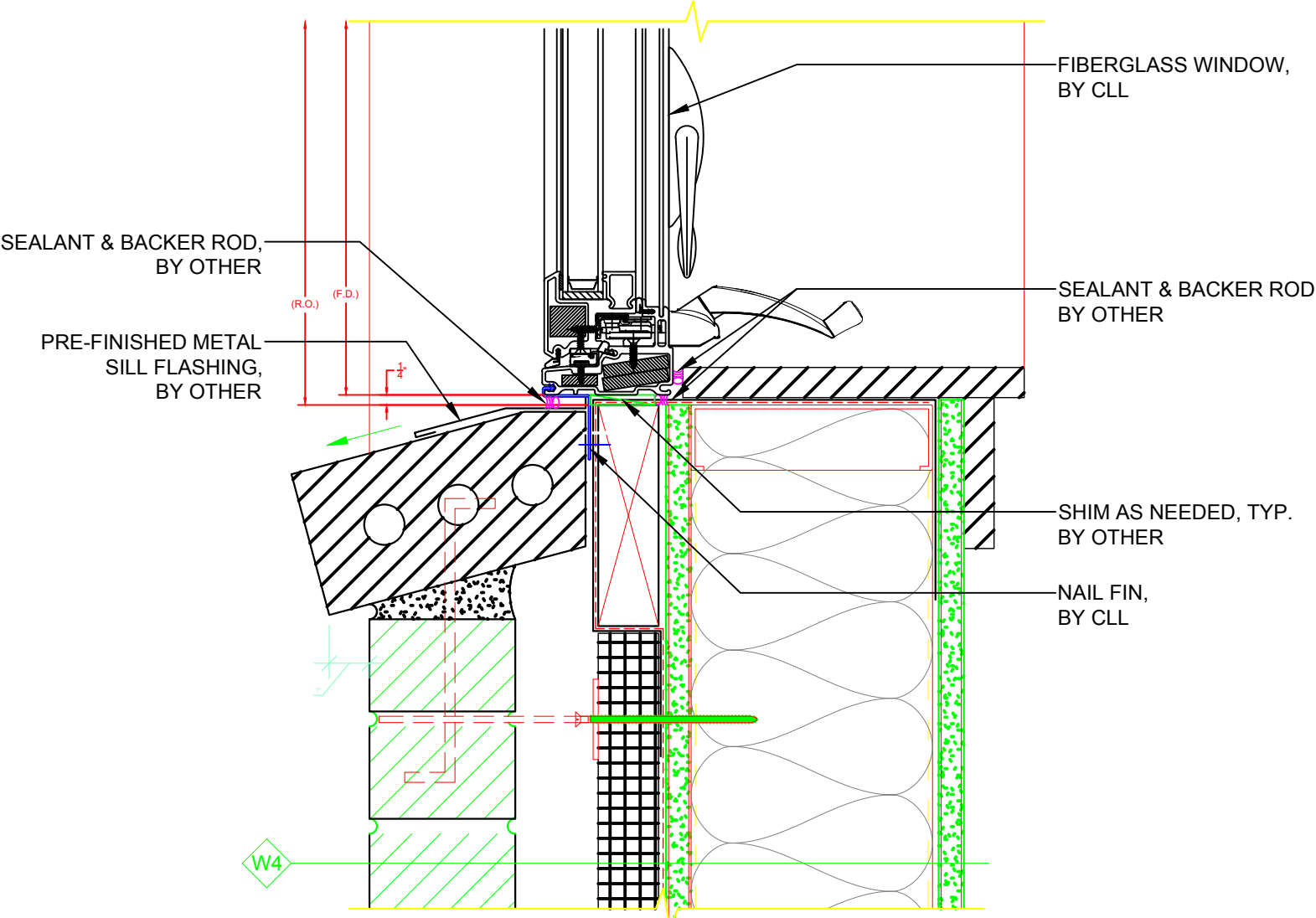
#8 x 5/8" SELF-DRILLING SHEET METAL SCREW @ ANCHOR STRAP (BY CLL)
#8 x 5/8" SELF-DRILLING SHEET METAL SCREW @ PANNING (BY CLL)



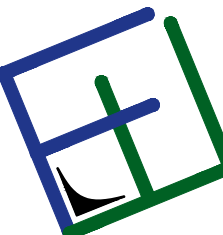
JAMB DETAIL - 2100 AWNING WINDOW
(W/ ANCHOR STRAP)



HEAD DETAIL - 2100 AWNING WINDOW
(W/ INSTALL THROUGH FRAME)

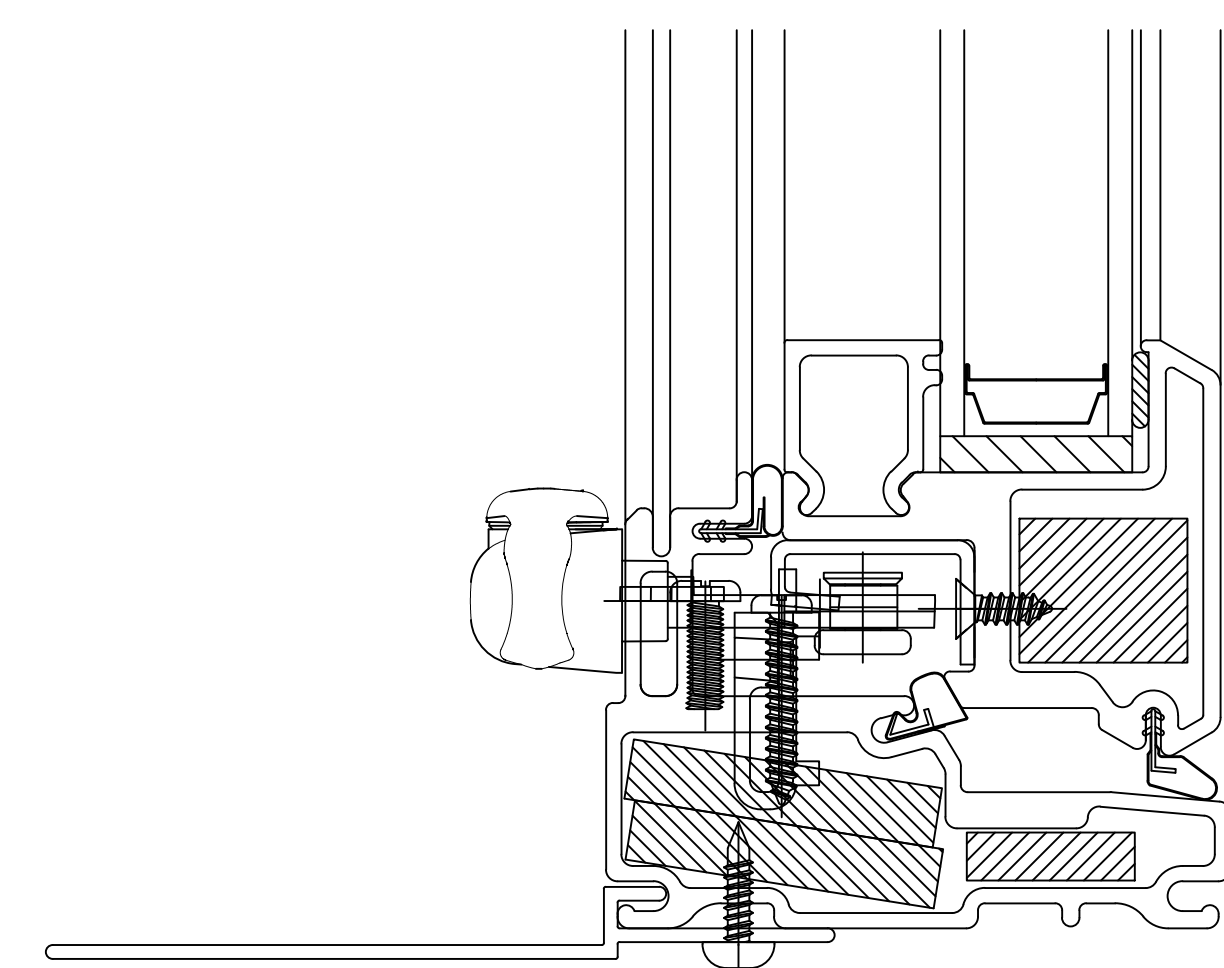


SILL DETAIL - 2100 AWNING WINDOW
(W/ RIGID NAIL FIN)

| | | | | | | |
|------------------------|----------|----|---|--|-----------------------|------------|
| SERIES/CONFIGURATION: | | | <div><div>FiberFrameTM Comfort Line® <small>FIBERGLASS WINDOWS, PATIO DOORS, SUNROOMS & STOREFRONT</small></div></div> | | COMFORT LINE LTD. | |
| 2100 SERIES AWNING | | | | | 5500 ENTERPRISE BLVD. | |
| DRAWING TYPE: | | | THIS DRAWING IS THE PROPERTY OF COMFORT LINE LTD. DESIGN CONCEPTS AND INFORMATION MAY NOT BE REPRODUCED USED OR DISCLOSED WITHOUT THE WRITTEN PERMISSION OF COMFORT LINE LTD. | | TOLEDO, OH 43612 | |
| DETAIL WINDOW PROFILES | | | | | 419-729-8520 | |
| | | | | | | |
| | | | | | PROJECT: 2100 AWNING | |
| | | | SCALE: 3" = 1' - 0" | | | |
| | | | DATE: 2/13/17 | | | |
| DATE | REVISION | BY | DRAWN BY: AJL | | QUOTE: #### | SHEET: AW3 |

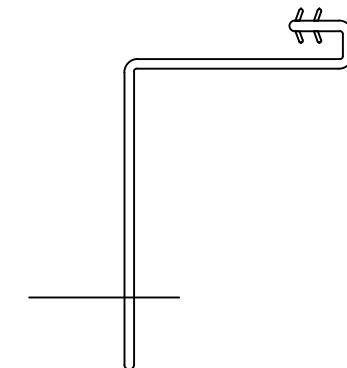
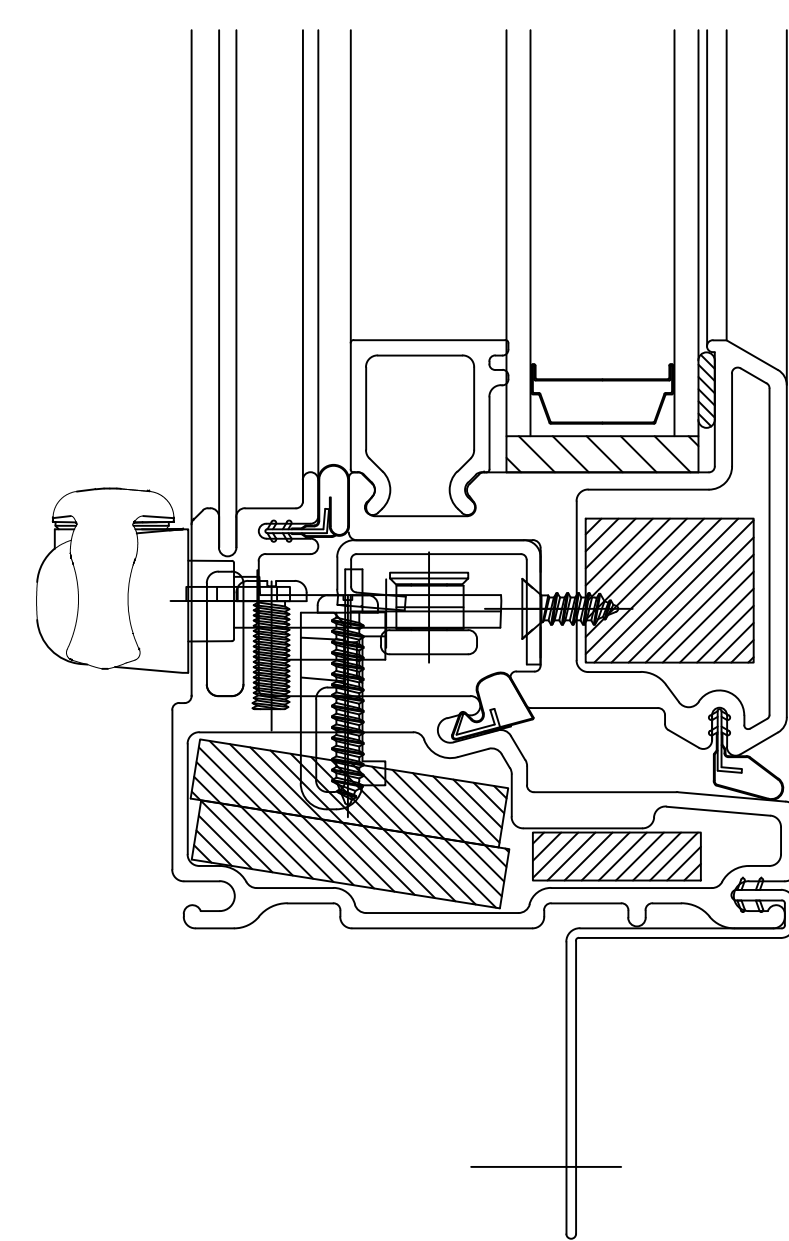
2100 SERIES AWNING

(AVAILABLE ACCESSORIES)



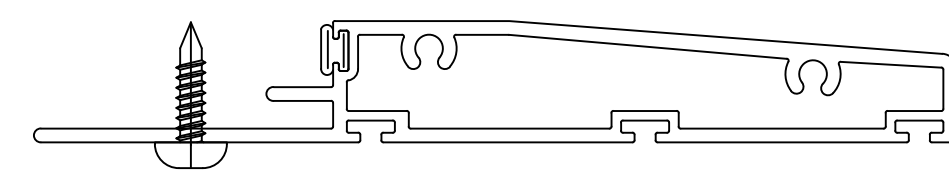
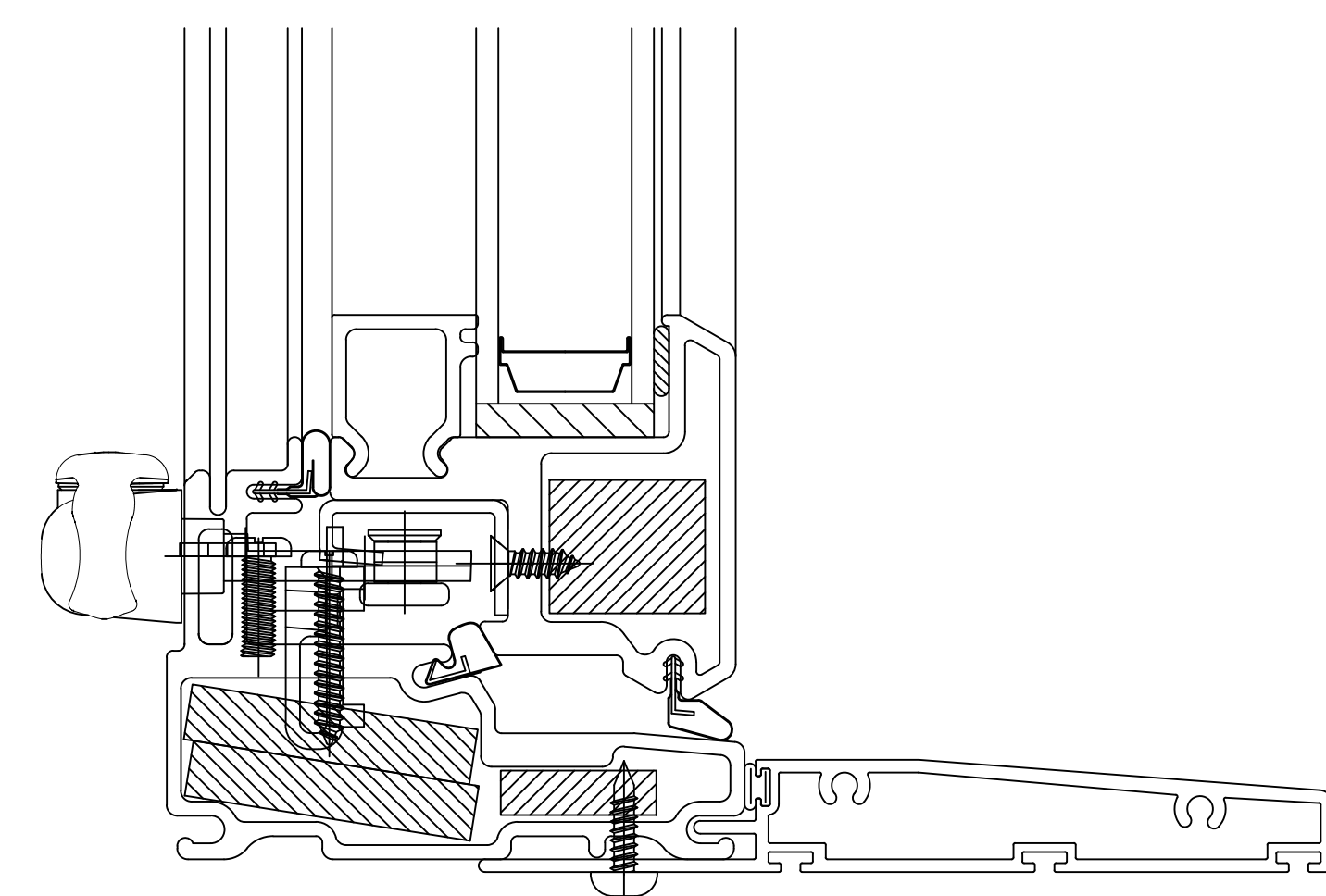
2100 AWNING WINDOW
W/ ANCHOR STRAP

#



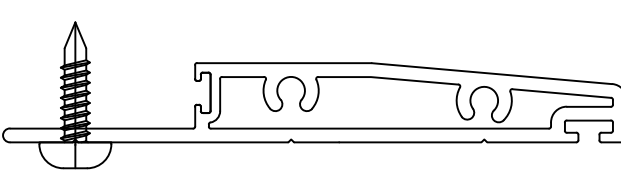
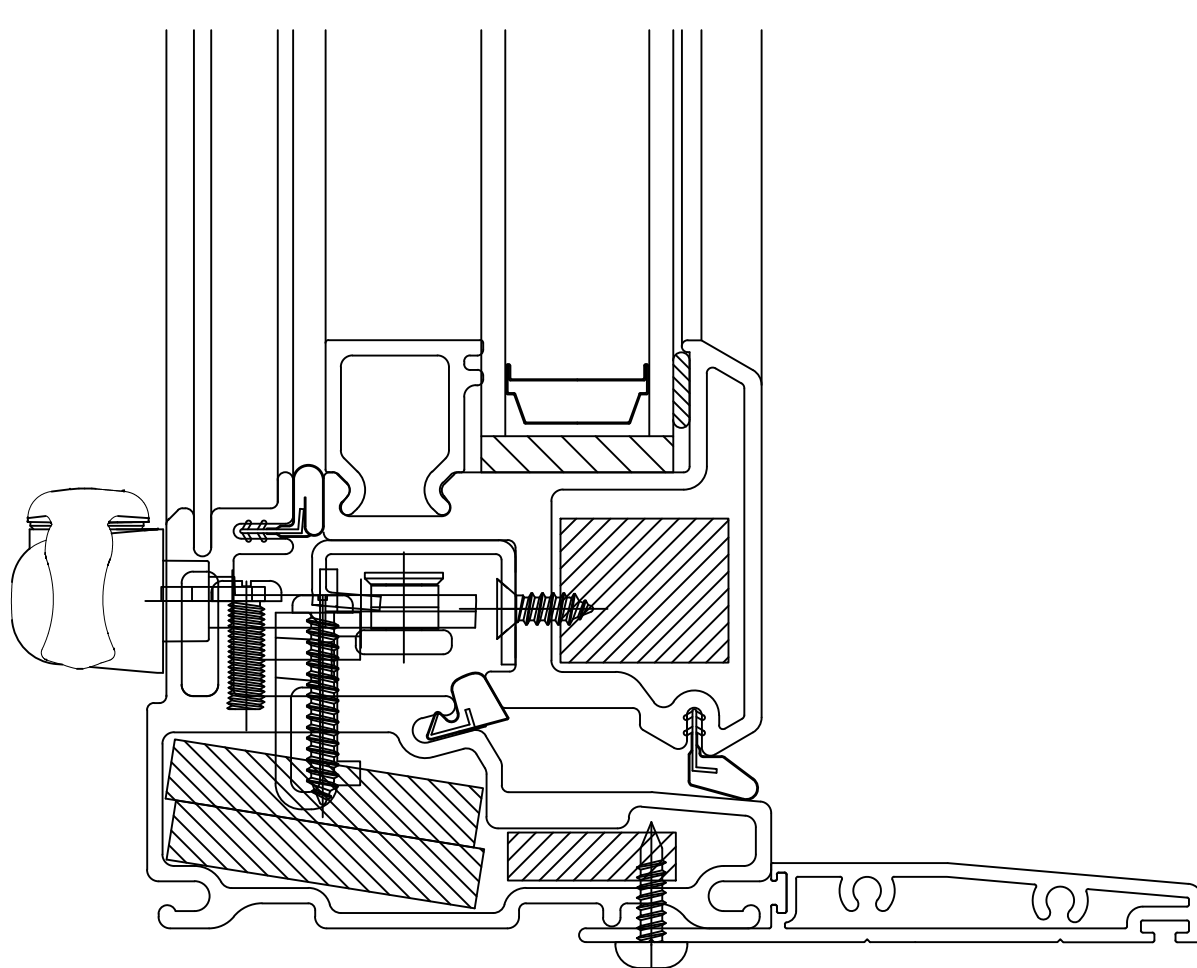
2100 AWNING WINDOW
W/ RIGID NAIL FIN

#



2100 AWNING WINDOW
W/ 3 1/4" PANNING

#

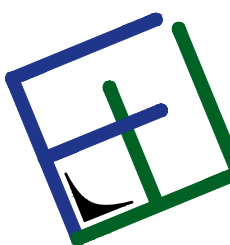


2100 AWNING WINDOW
W/ 2 1/4" PANNING

#

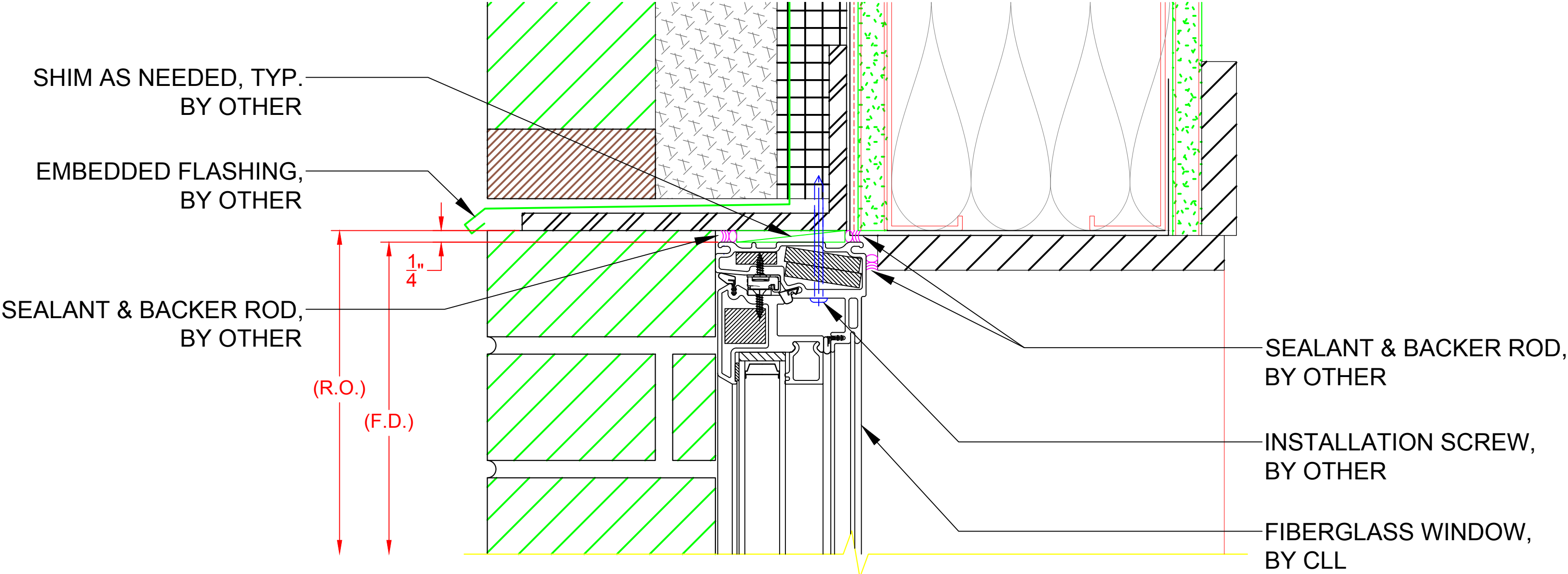
NOTE: - ACCESSORIES SHOWN ARE AVAILABLE OPTIONS FOR THE CURRENT WINDOW SERIES.
- ALL ACCESSORIES ARE NOT AVAILABLE FOR EVERY WINDOW SERIES.

SEE PRODUCT SPECIFICATIONS PAGE FOR COMPLETE PRODUCT DESCRIPTION.

| | | | | | |
|---|----------|----|---|--|-------------|
| SERIES/CONFIGURATION: 2100 SERIES AWNING | | |  <div>FiberFrameTM Comfort Line[®] <small>FIBERGLASS WINDOWS, PATIO DOORS, SUNROOMS & STOREFRONT</small></div> | COMFORT LINE LTD. 5500 ENTERPRISE BLVD. TOLEDO, OH 43612 419-729-8520 | |
| | | | | | |
| DRAWING TYPE: PROFILE W/ ACCESSORIES | | | THIS DRAWING IS THE PROPERTY OF COMFORT LINE LTD. DESIGN CONCEPTS AND INFORMATION MAY NOT BE REPRODUCED USED OR DISCLOSED WITHOUT THE WRITTEN PERMISSION OF COMFORT LINE LTD. | | |
| | | | | | |
| | | | | | |
| | | | PROJECT: 2100 AWNING | | |
| | | | SCALE: 1' - 0" = 1' - 0" | | |
| | | | DATE: 2/13/17 | | |
| DATE | REVISION | BY | DRAWN BY: AJL | | QUOTE: #### |
| | | | | | SHEET: AW4 |

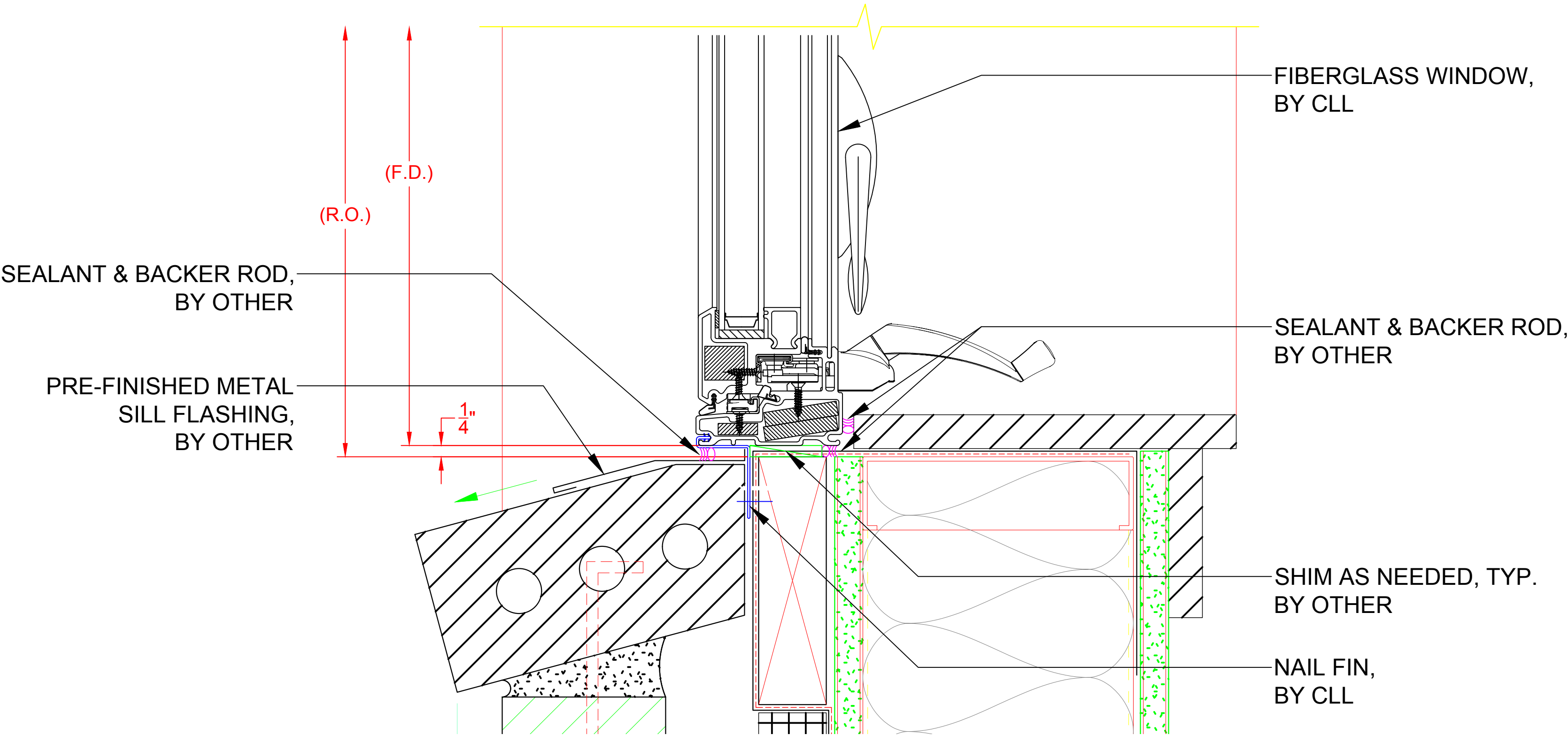
2100 SERIES AWNING

(INSTALLATION METHODS)



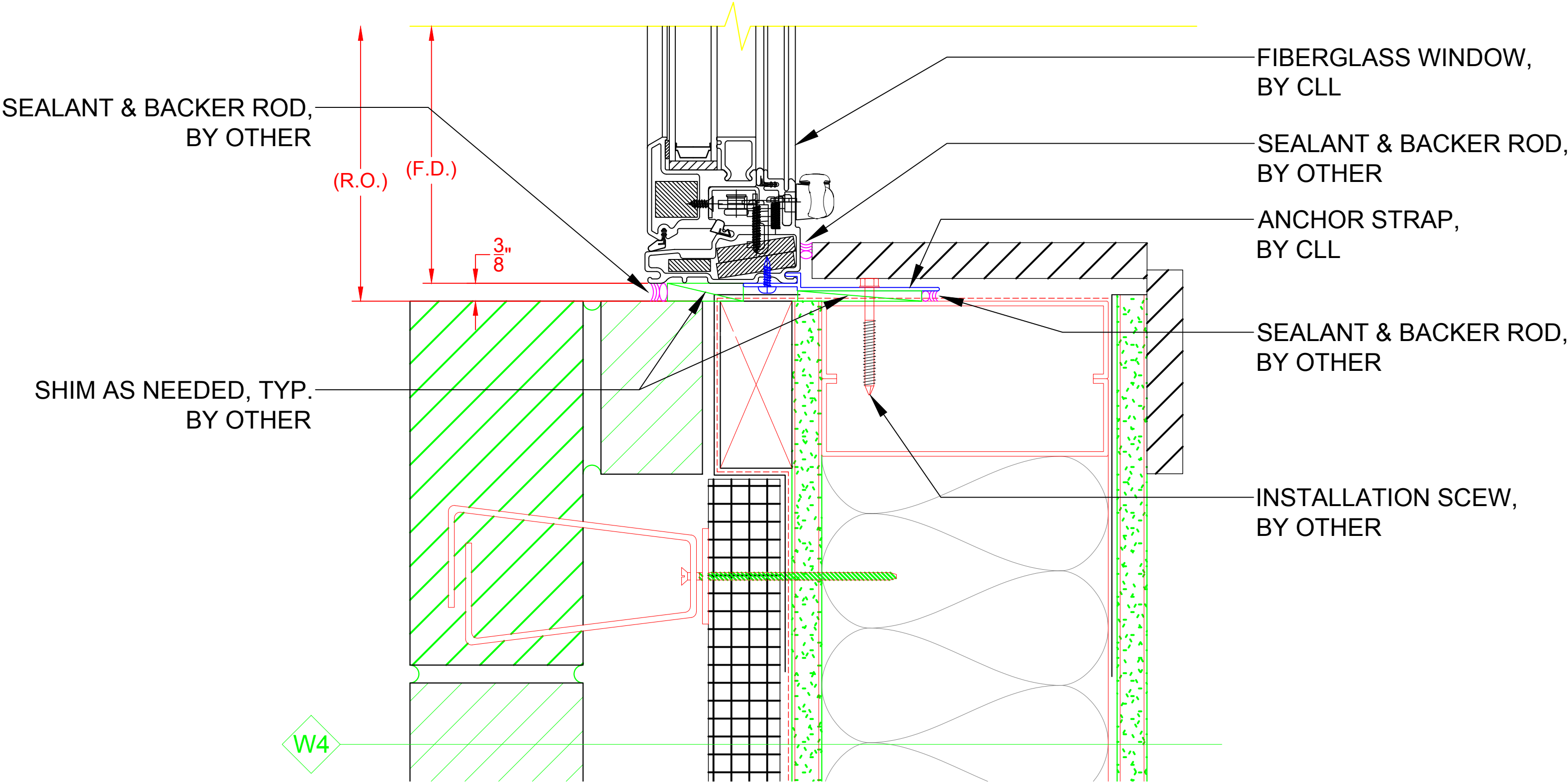
HEAD DETAIL - 2100 AWNING WINDOW
(W/ INSTALL THROUGH FRAME)

H1



SILL DETAIL - 2100 AWNING WINDOW
(W/ RIGID NAIL FIN)

S1

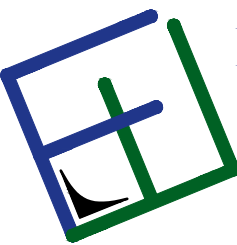


JAMB DETAIL - 2100 AWNING WINDOW
(W/ ANCHOR STRAP)

J1

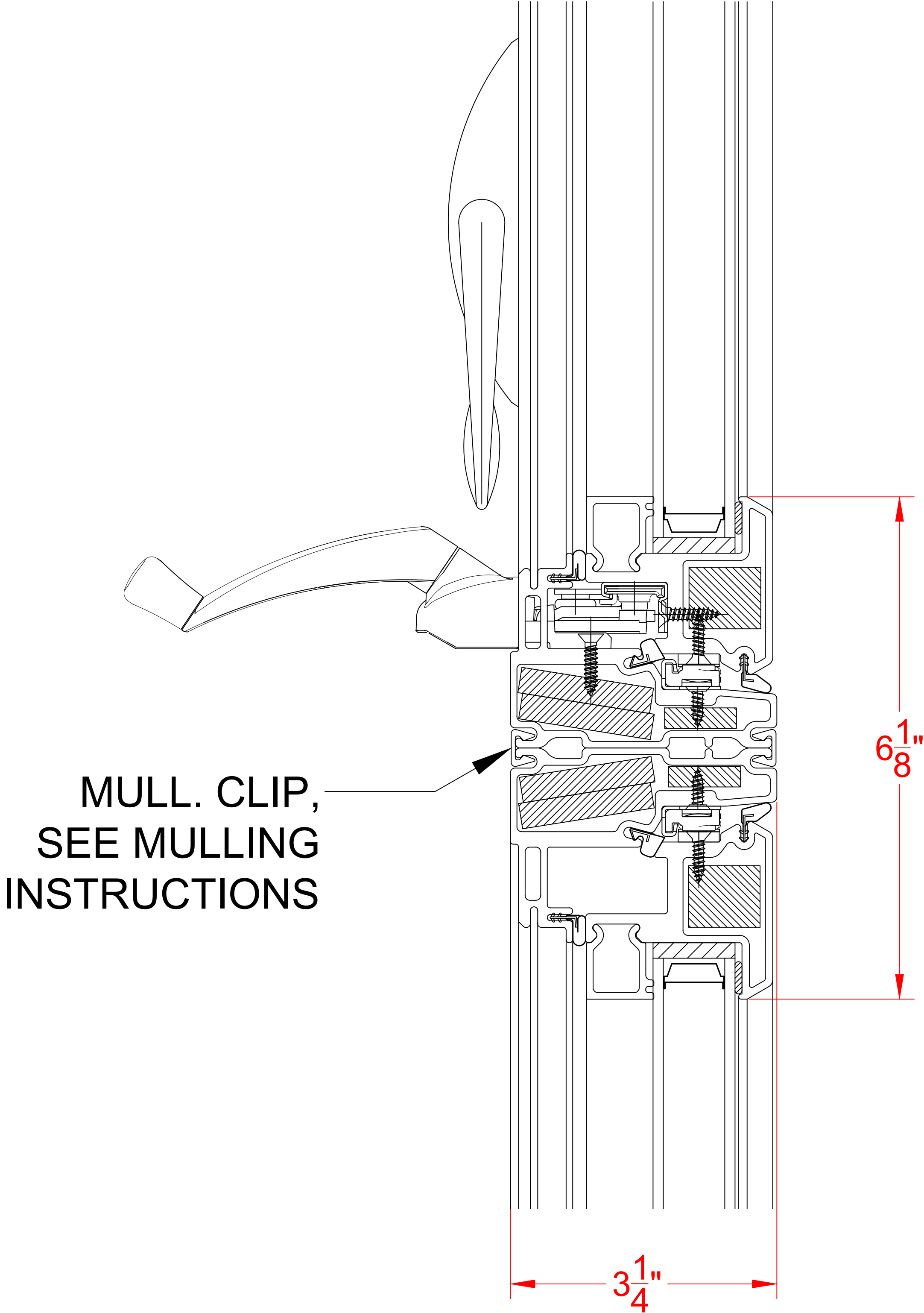
- * NOTE:
- ALL DRAWINGS ARE FOR REFERENCE PURPOSES ONLY
 - ACTUAL INSTALLATION, FASTENERS, ETC. MAY VARY
 - AVB & SEALANT BY OTHER, PER LOCAL & INTERNATIONAL BUILDING CODES
 - ALL INSTALLATION SCREWS GOING INTO R.O. ARE BY OTHER
 - ALL SHIMS ARE BY OTHER

SEE PRODUCT SPECIFICATIONS PAGE FOR COMPLETE PRODUCT DESCRIPTION.

| | | | | | |
|-----------------------|----------|----|--|--|------------|
| SERIES/CONFIGURATION: | | | <div><div>FiberFrameTM Comfort Line® <small>FIBERGLASS WINDOWS, PATIO DOORS, SUNROOMS & STOREFRONT</small></div></div> <div>COMFORT LINE LTD. 5500 ENTERPRISE BLVD. TOLEDO, OH 43612 419-729-8520</div> | | |
| 2100 SERIES AWNING | | | | | |
| DRAWING TYPE: | | | THIS DRAWING IS THE PROPERTY OF COMFORT LINE LTD. DESIGN CONCEPTS AND INFORMATION MAY NOT BE REPRODUCED USED OR DISCLOSED WITHOUT THE WRITTEN PERMISSION OF COMFORT LINE LTD. | | |
| INSTALLATION EXAMPLES | | | | | |
| | | | | | |
| | | | PROJECT: 2100 AWNING | | |
| | | | SCALE: 6" = 1' - 0" | | |
| | | | DATE: 2/13/17 | | |
| DATE | REVISION | BY | QUOTE: #### | | SHEET: AW5 |
| | | | DRAWN BY: AJL | | |

2100 SERIES AWNING

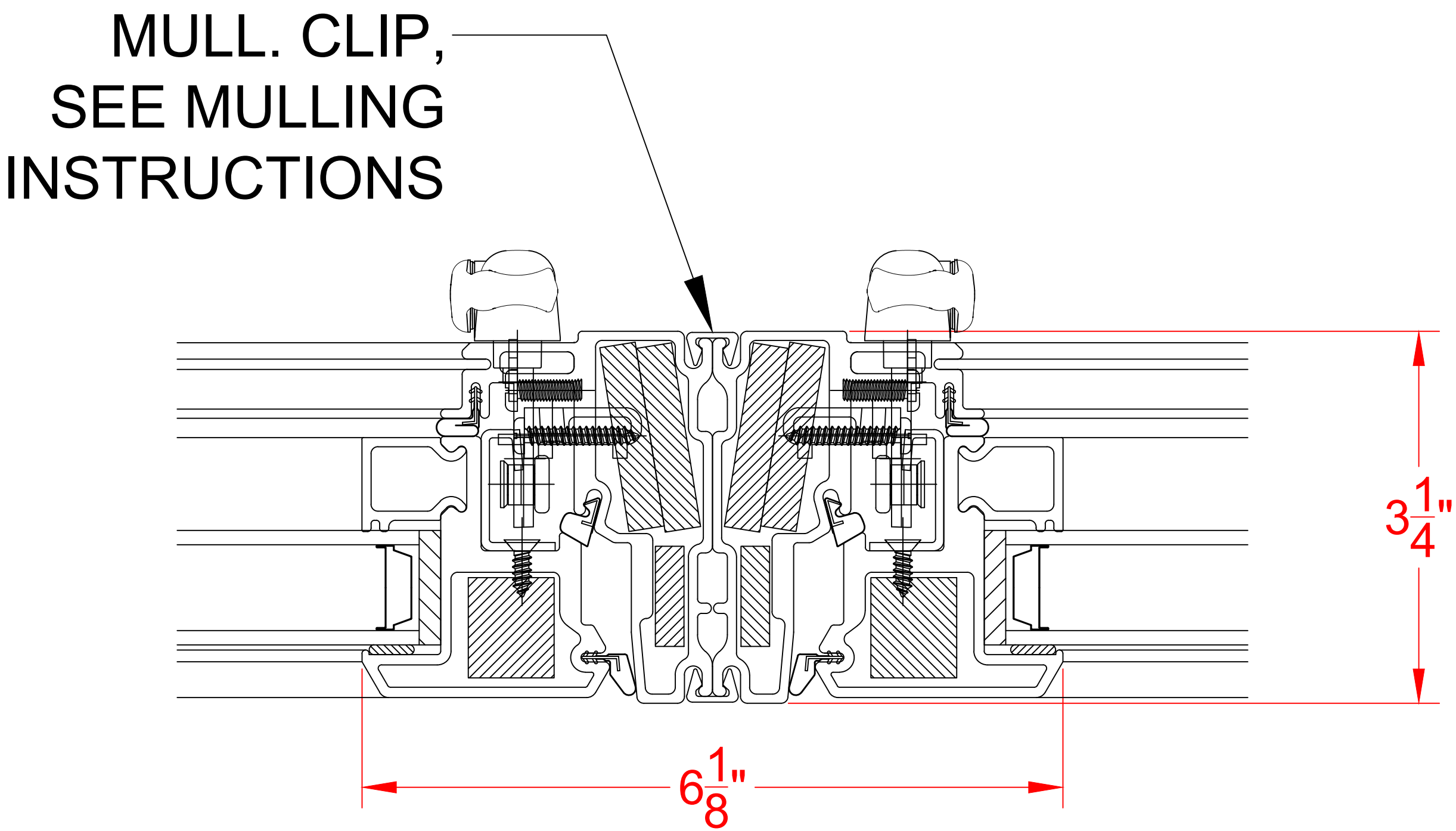
(MULLING DETAIL)



MULL. DETAIL - AWNING / AWNING - TYP.
HORIZONTAL MULLS


MULLING OPTIONS INCLUDE:

- 2100 SERIES
- 6500 SERIES
- 8000 SERIES



MULL. DETAIL - AWNING / AWNING - TYP.
VERTICAL MULLS

SEE PRODUCT SPECIFICATIONS PAGE FOR COMPLETE PRODUCT DESCRIPTION.

| | | | | | | |
|------------------------|----------|----|---|--|--|--|
| SERIES/CONFIGURATION: | | |  <div>FiberFrameTM Comfort Line[®] <small>FIBERGLASS WINDOWS, PATIO DOORS, SUNROOMS & STOREFRONT</small></div> | | COMFORT LINE LTD. 5500 ENTERPRISE BLVD. TOLEDO, OH 43612 419-729-8520 | |
| DRAWING TYPE: | | | | | | |
| MULLING SECTION DETAIL | | | THIS DRAWING IS THE PROPERTY OF COMFORT LINE LTD. DESIGN CONCEPTS AND INFORMATION MAY NOT BE REPRODUCED USED OR DISCLOSED WITHOUT THE WRITTEN PERMISSION OF COMFORT LINE LTD. | | | |
| | | | | | PROJECT: 2100 AWNING | |
| | | | SCALE: 1' - 0" = 1' - 0" | | | |
| | | | DATE: 2/13/17 | | QUOTE: ##### | |
| DATE | REVISION | BY | DRAWN BY: AJL | | SHEET: AW6 | |