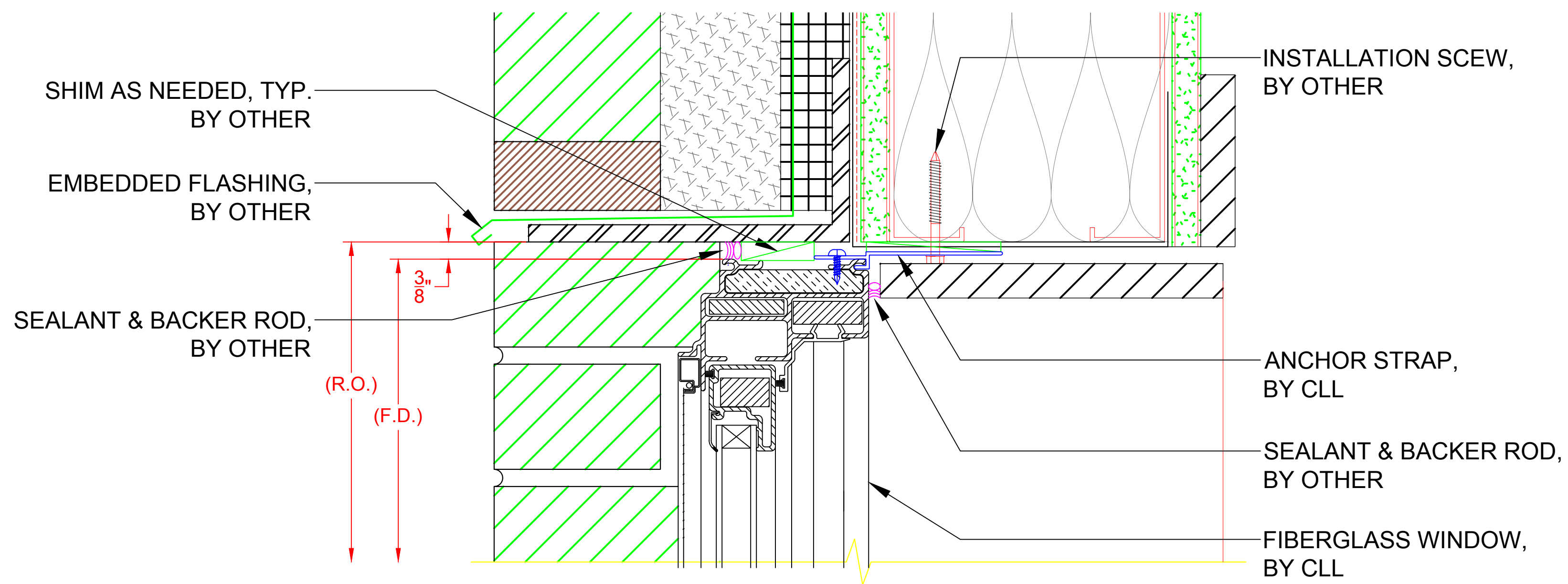


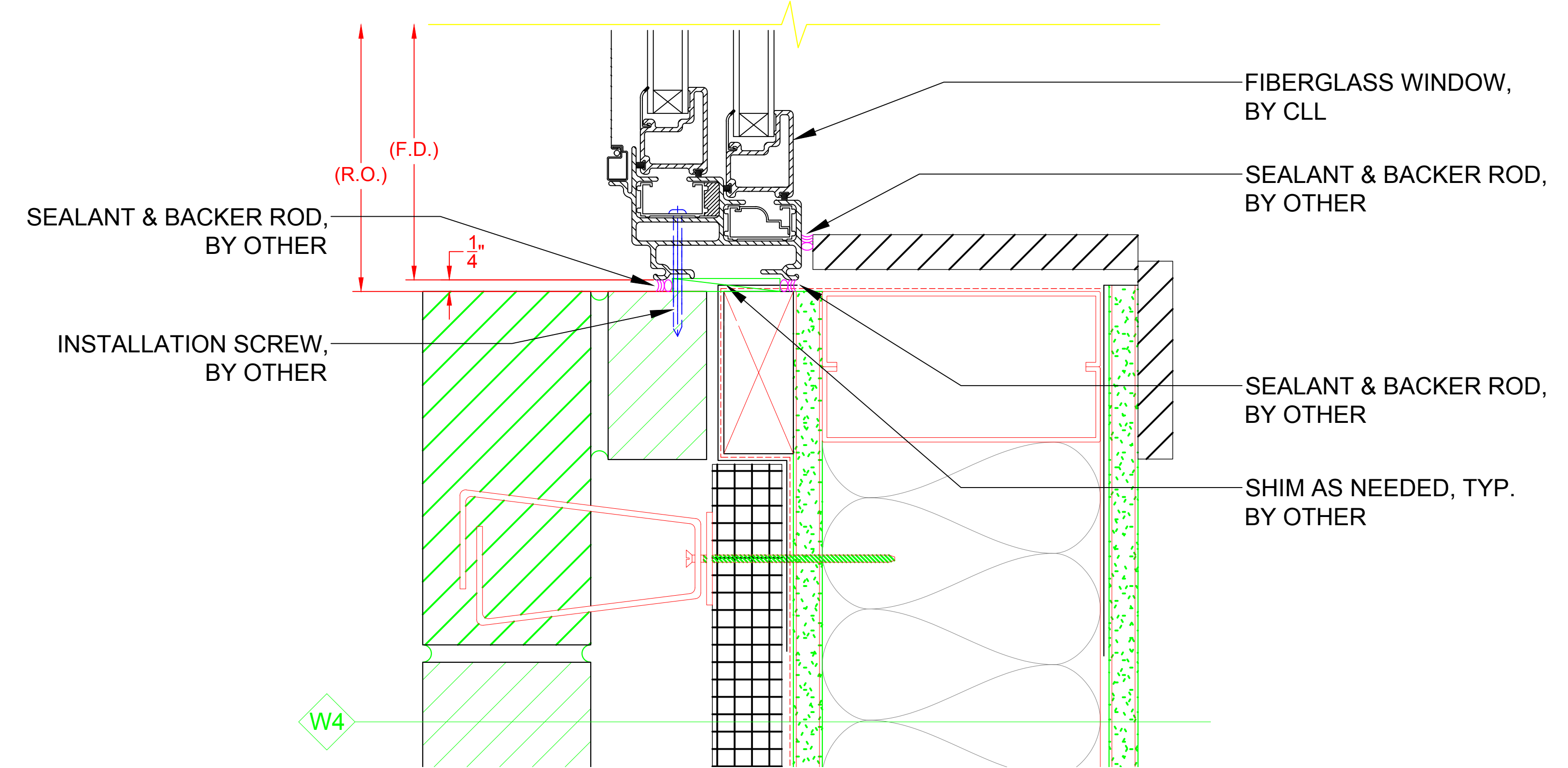
8000 SERIES DOUBLE HUNG

(INSTALLATION METHODS)



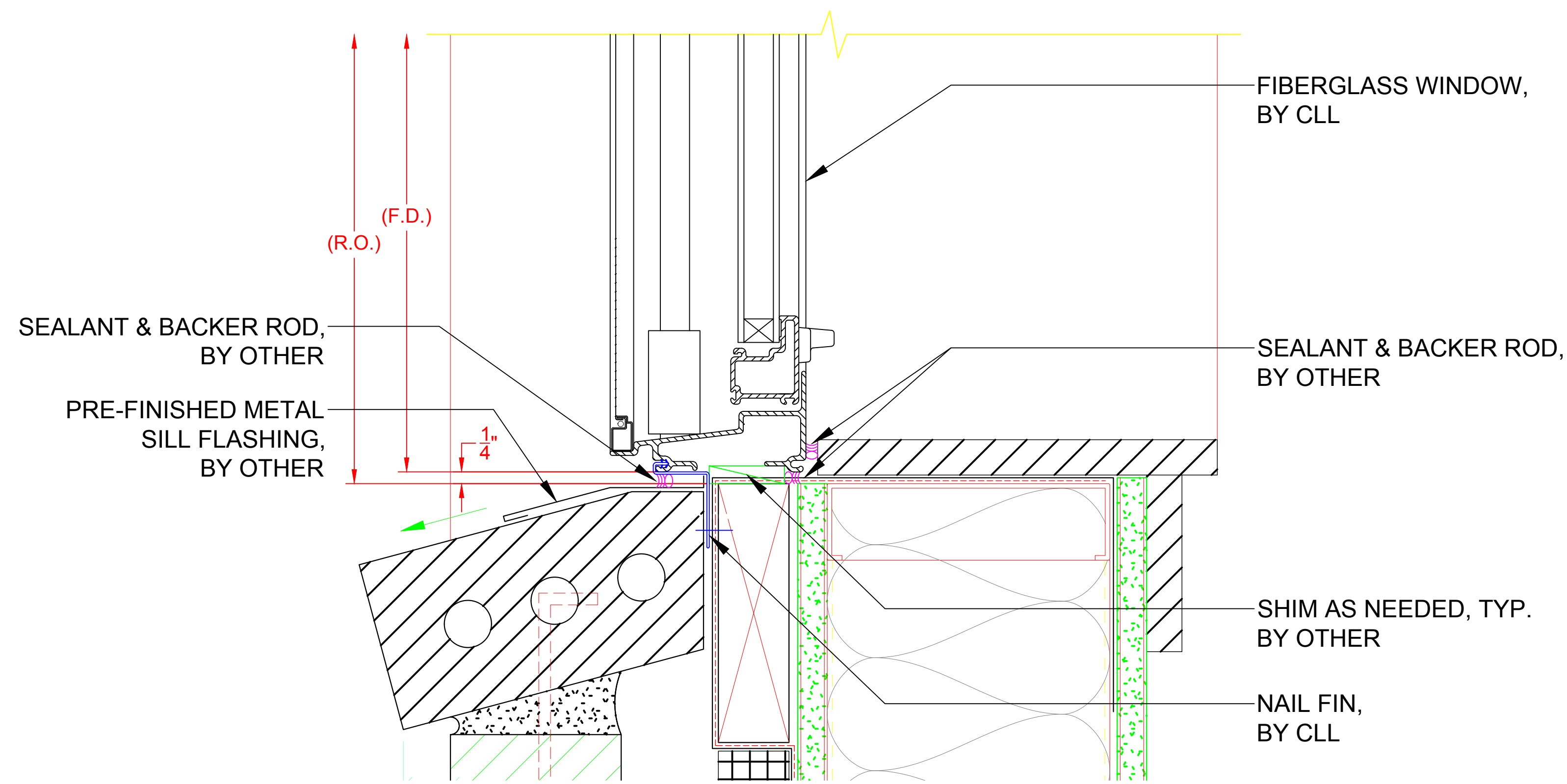
**HEAD DETAIL - 8000 DOUBLE HUNG
(W/ ANCHOR STRAP)**

H1



**JAMB DETAIL - 8000 DOUBLE HUNG
(W/ INSTALL THROUGH FRAME)**

J1




**SILL DETAIL - 8000 DOUBLE HUNG
(W/ RIGID NAIL FIN)**

S1

*** NOTE:**

- ALL DRAWINGS ARE FOR REFERENCE PURPOSES ONLY
- ACTUAL INSTALLATION, FASTENERS, ETC. MAY VARY
- AVB & SEALANT BY OTHER, PER LOCAL & INTERNATIONAL BUILDING CODES
- ALL INSTALLATION SCREWS GOING INTO R.O. ARE BY OTHER
- ALL SHIMS ARE BY OTHER

SEE PRODUCT SPECIFICATIONS PAGE FOR COMPLETE PRODUCT DESCRIPTION.

SERIES/CONFIGURATION: 8000 SERIES DOUBLE HUNG		 <p>COMFORT LINE LTD. 5500 ENTERPRISE BLVD. TOLEDO, OH 43612 419-729-8520</p>	PROJECT: 8000 DOUBLE HUNG	
DRAWING TYPE: INSTALLATION EXAMPLES			THIS DRAWING IS THE PROPERTY OF COMFORT LINE LTD. DESIGN CONCEPTS AND INFORMATION MAY NOT BE REPRODUCED USED OR DISCLOSED WITHOUT THE WRITTEN PERMISSION OF COMFORT LINE LTD.	
		SCALE: 6" = 1' - 0"	QUOTE: ####	
		DATE: 2/13/17	SHEET: DH5	
DATE	REVISION	BY	DRAWN BY: AJL	