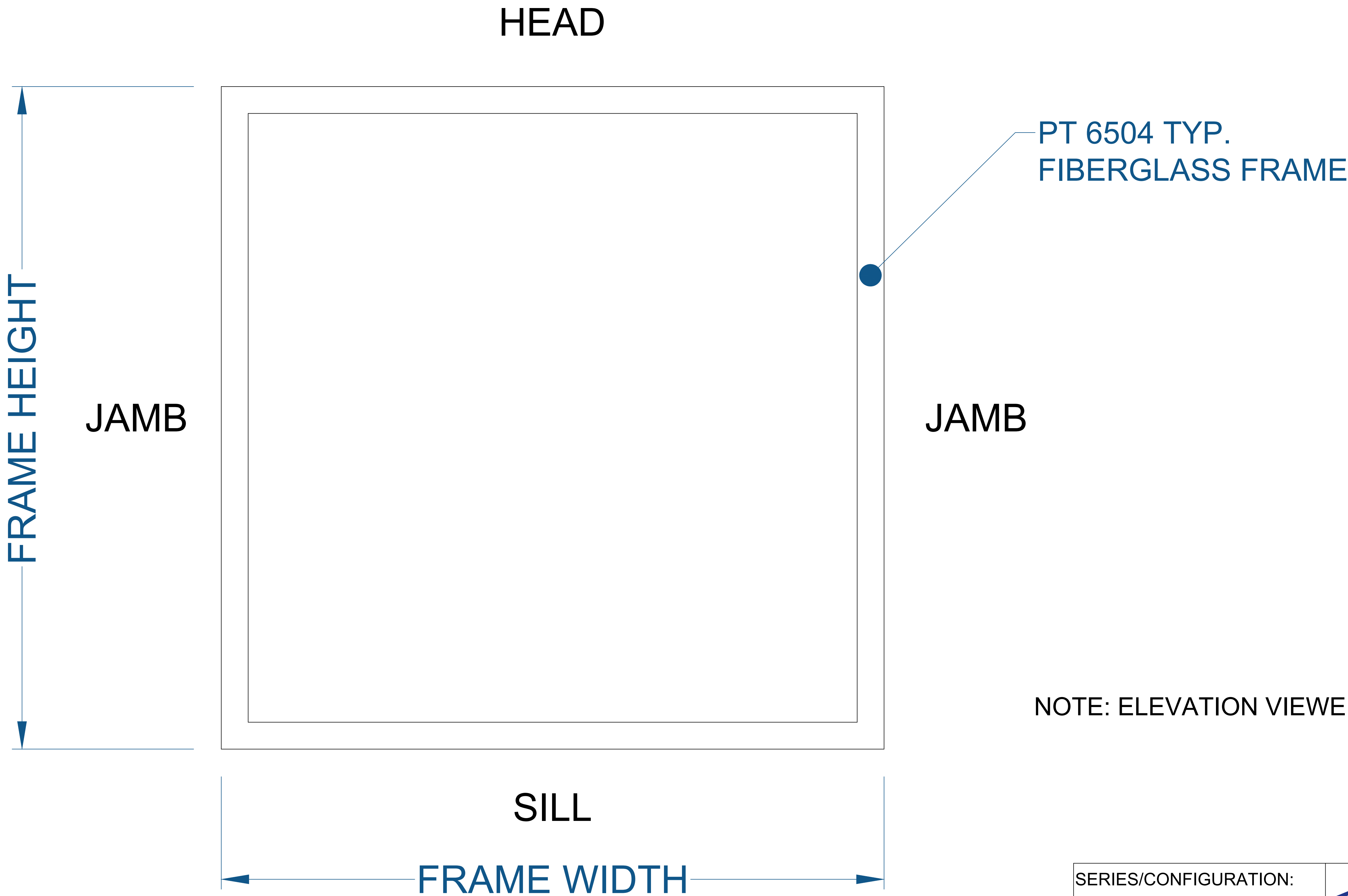



# 6500 SERIES PICTURE

(ELEVATION DRAWING)



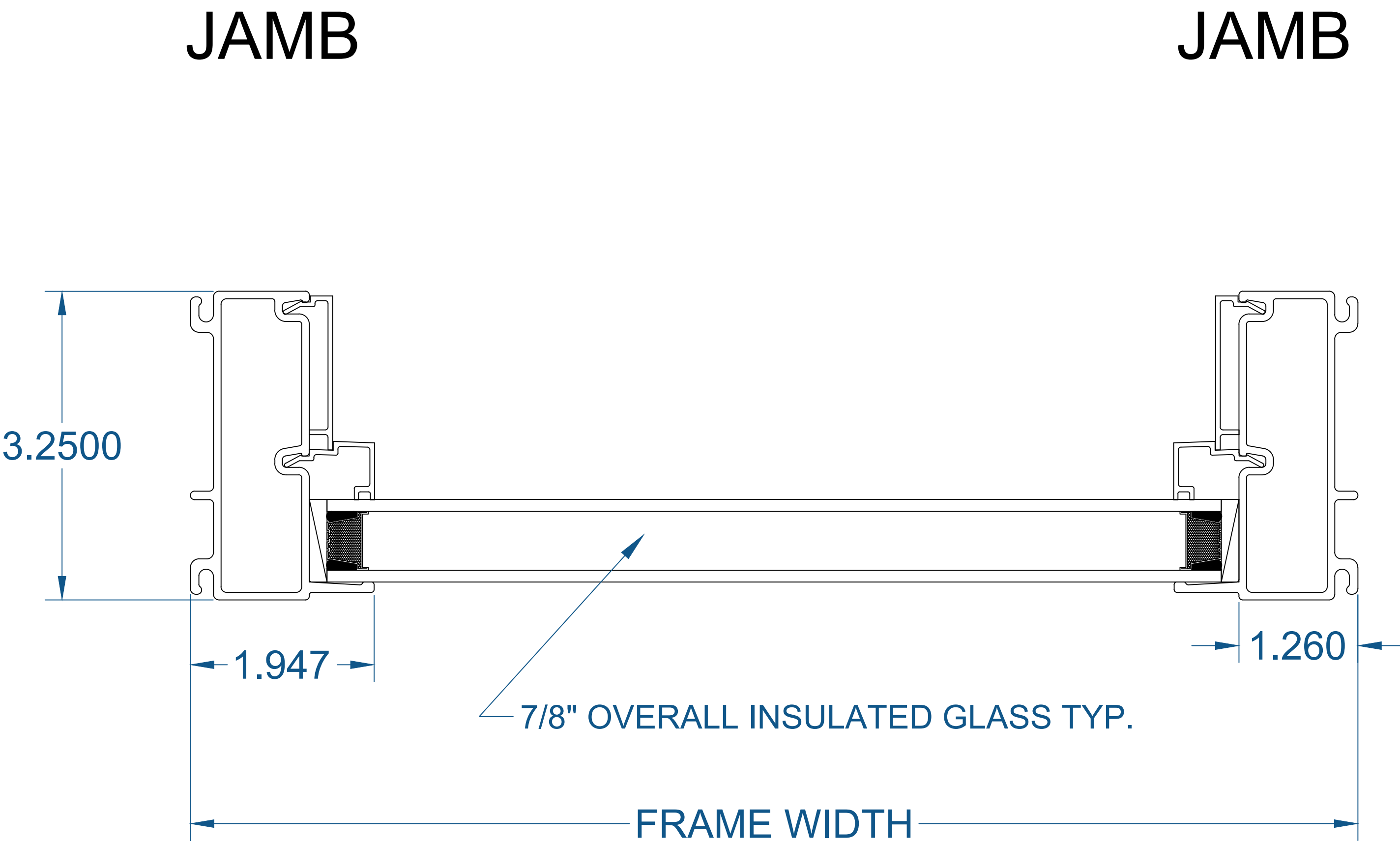
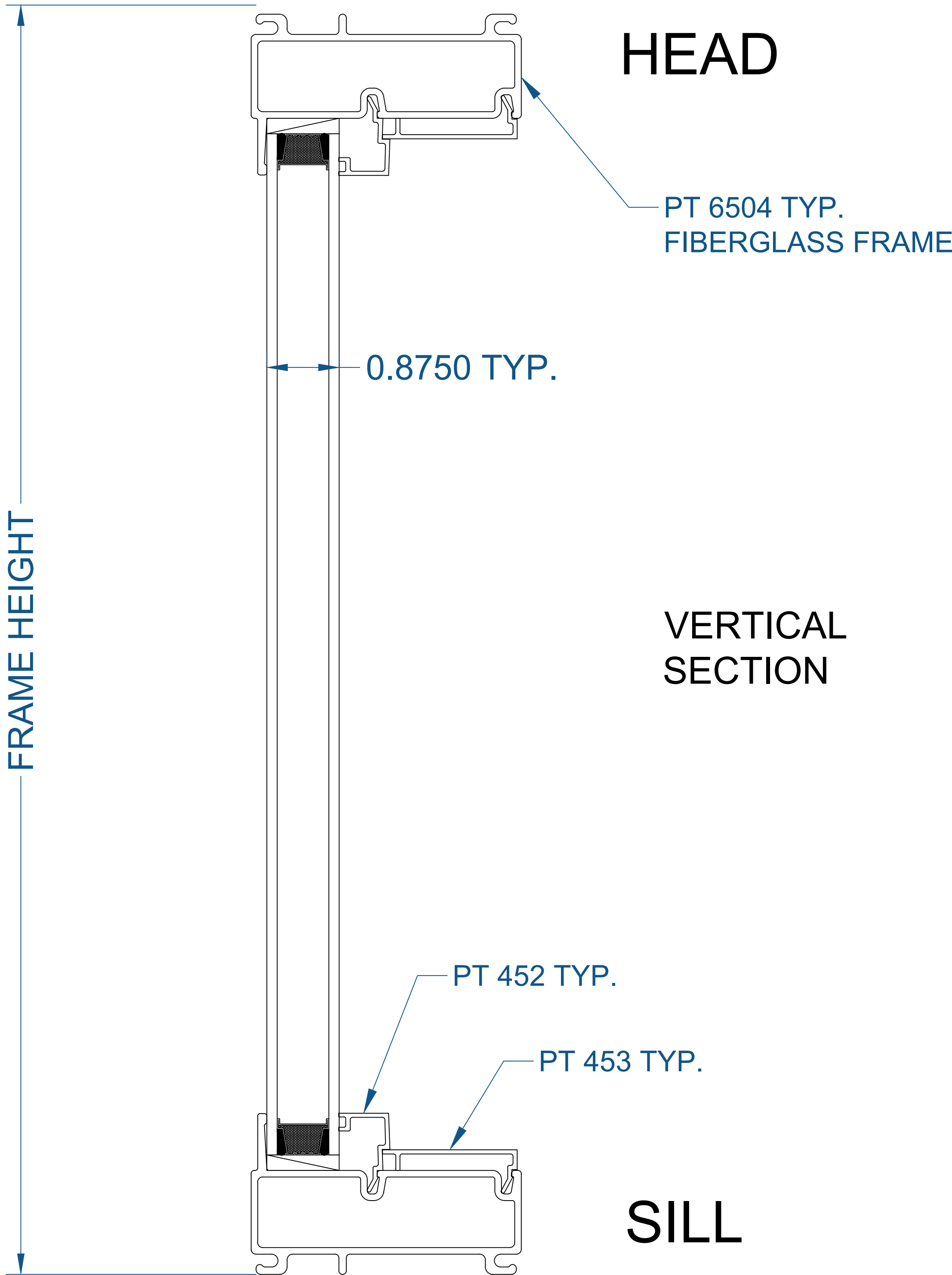
NOTE: ELEVATION VIEWED FROM THE OUTSIDE LOOKING IN.

SEE PRODUCT SPECIFICATIONS PAGE FOR COMPLETE PRODUCT DESCRIPTION.

SERIES/CONFIGURATION:			 <div>COMFORT LINE LTD. 5500 ENTERPRISE BLVD. TOLEDO, OH 43612 419-729-8520</div>	
6500 SERIES PICTURE WINDOW				
DRAWING TYPE:			THIS DRAWING IS THE PROPERTY OF COMFORT LINE LTD. DESIGN CONCEPTS AND INFORMATION MAY NOT BE REPRODUCED USED OR DISCLOSED WITHOUT THE WRITTEN PERMISSION OF COMFORT LINE LTD.	
ELEVATION DRAWING				
			PROJECT: 6500 PICTURE	
			SCALE: 3" = 1' - 0"	QUOTE: ####
			DATE: 2/13/17	
DATE	REVISION	BY	DRAWN BY: AJL	SHEET: SPW1


# 6500 SERIES PICTURE

(SECTION PROFILE)



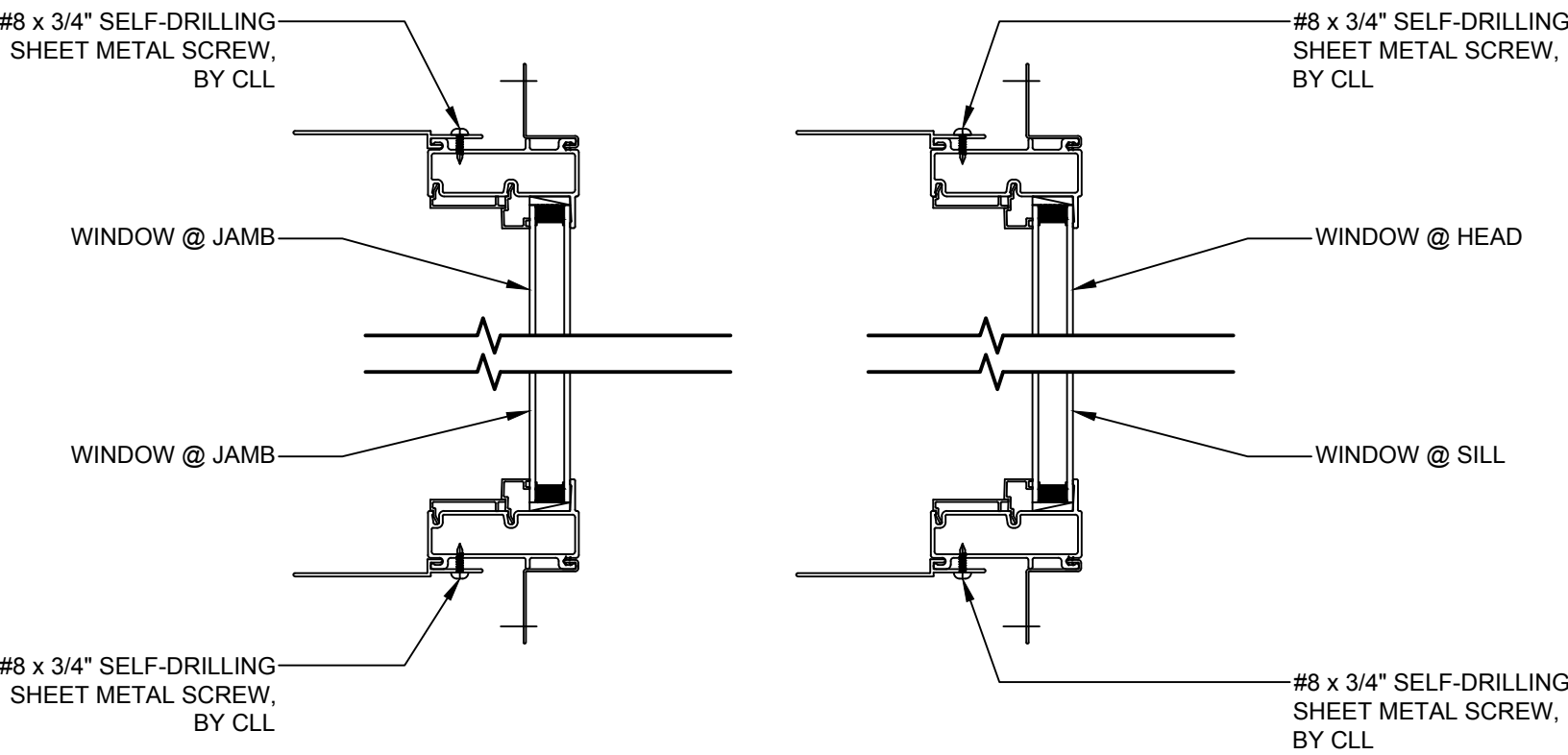
HORIZONTAL SECTION

SEE PRODUCT SPECIFICATIONS PAGE FOR COMPLETE PRODUCT DESCRIPTION.

SERIES/CONFIGURATION:				COMFORT LINE LTD. 5500 ENTERPRISE BLVD. TOLEDO, OH 43612 419-729-8520	
6500 SERIES PICTURE WINDOW					
DRAWING TYPE:			THIS DRAWING IS THE PROPERTY OF COMFORT LINE LTD. DESIGN CONCEPTS AND INFORMATION MAY NOT BE REPRODUCED USED OR DISCLOSED WITHOUT THE WRITTEN PERMISSION OF COMFORT LINE LTD.		
DETAIL WINDOW PROFILES					
			PROJECT: 6500 PICTURE		
			SCALE: 1' - 0" = 1' - 0"		
			DATE: 2/13/17		
DATE	REVISION	BY	DRAWN BY: AJL		QUOTE: ####
			SHEET: SPW2		

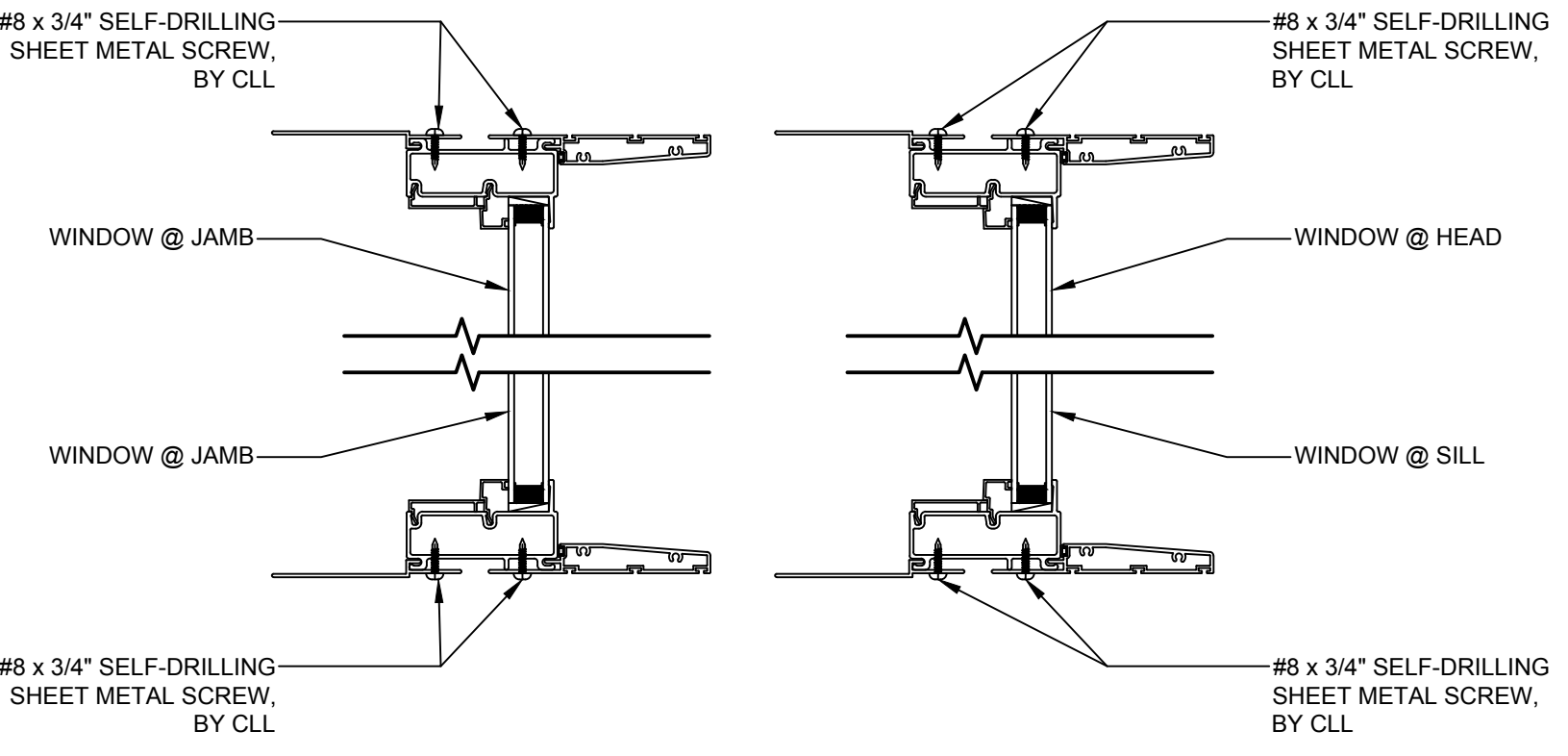
# 6500 SERIES PICTURE

(SERIES OVERVIEW)



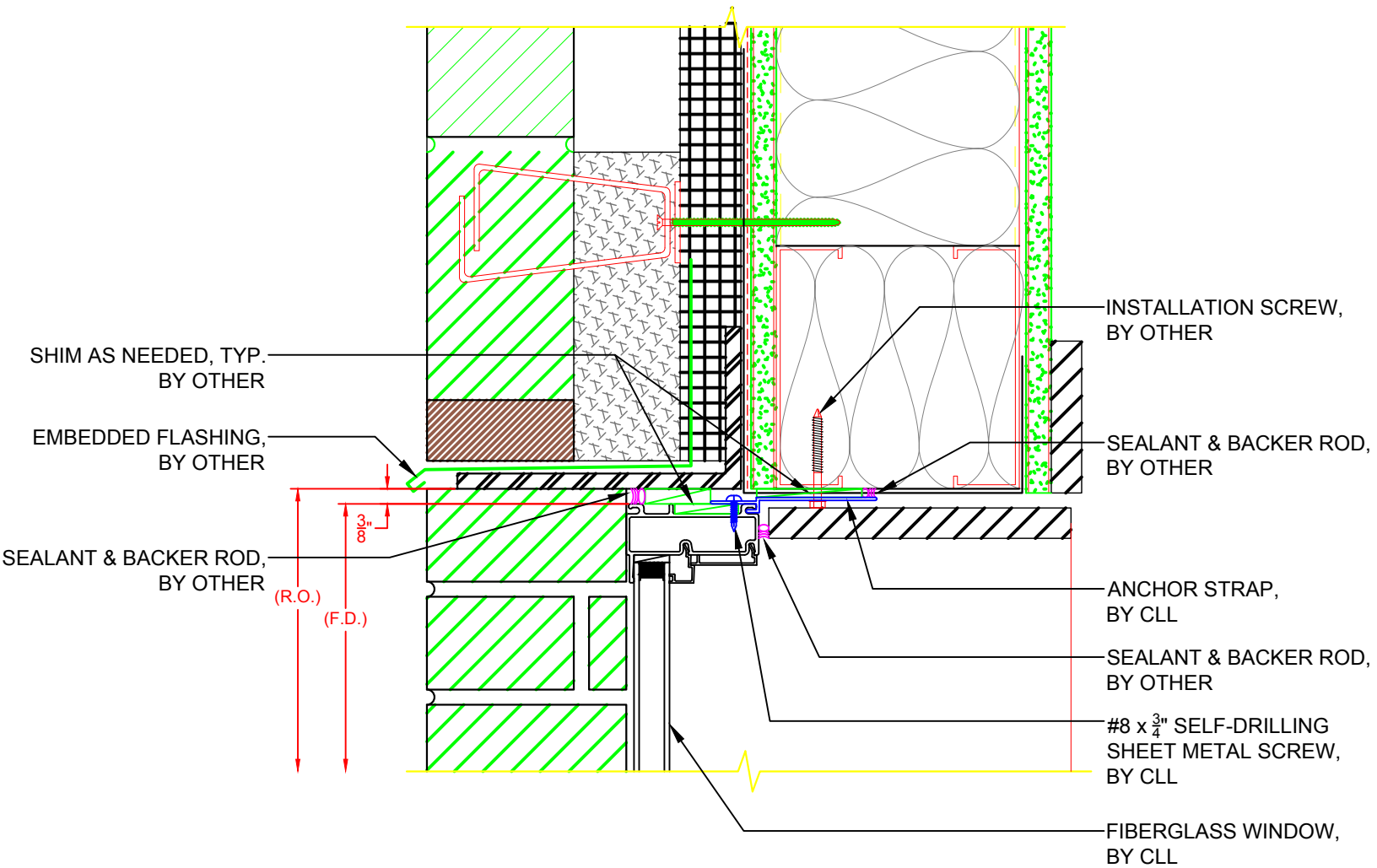
6500 SERIES PICTURE WINDOW PROFILE W/  
RIGID NAIL FIN & ANCHOR STRAP (BY CLL)

#8 x 3/4" SELF-DRILLING SHEET METAL SCREW @ ANCHOR STRAP (BY CLL)

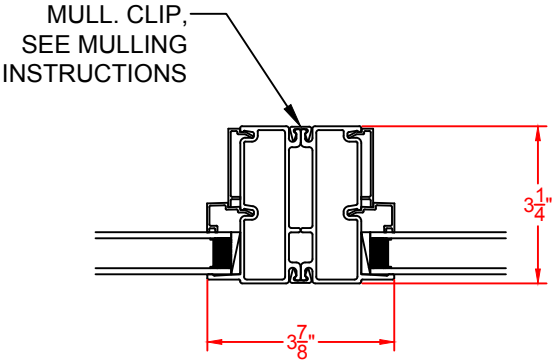


6500 SERIES PICTURE WINDOW PROFILE W/  
3 1/4" PANNING & ANCHOR STRAP (BY CLL)

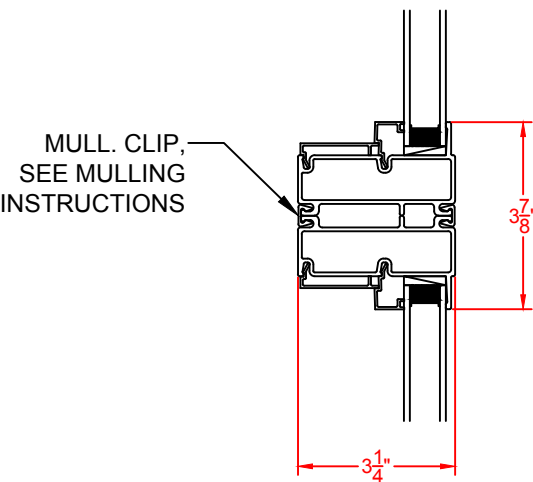
#8 x 3/4" SELF-DRILLING SHEET METAL SCREW @ ANCHOR STRAP (BY CLL)  
#8 x 3/4" SELF-DRILLING SHEET METAL SCREW @ PANNING (BY CLL)



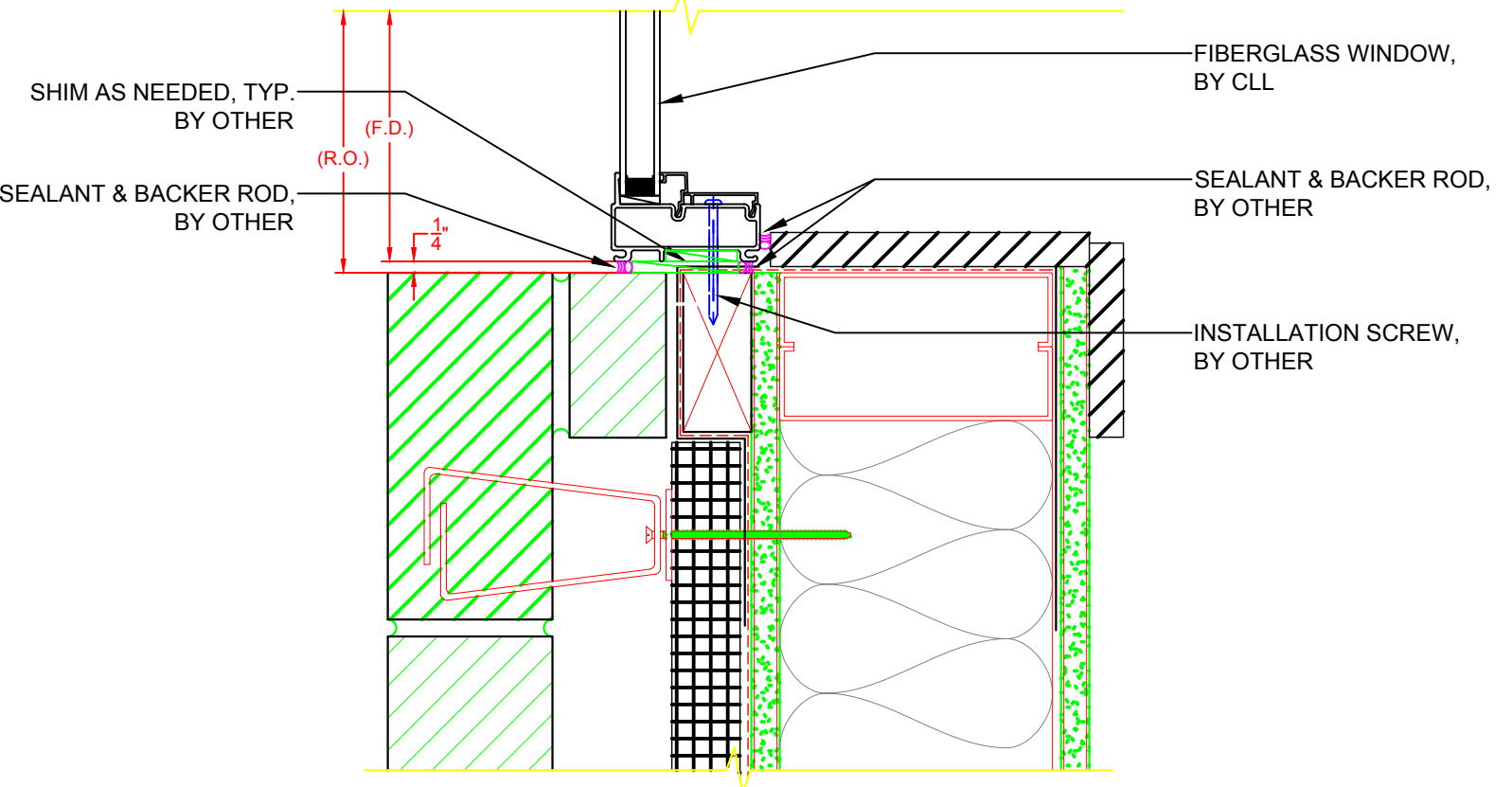
HEAD DETAIL - 6500 PICTURE WINDOW  
(W/ ANCHOR STRAP)



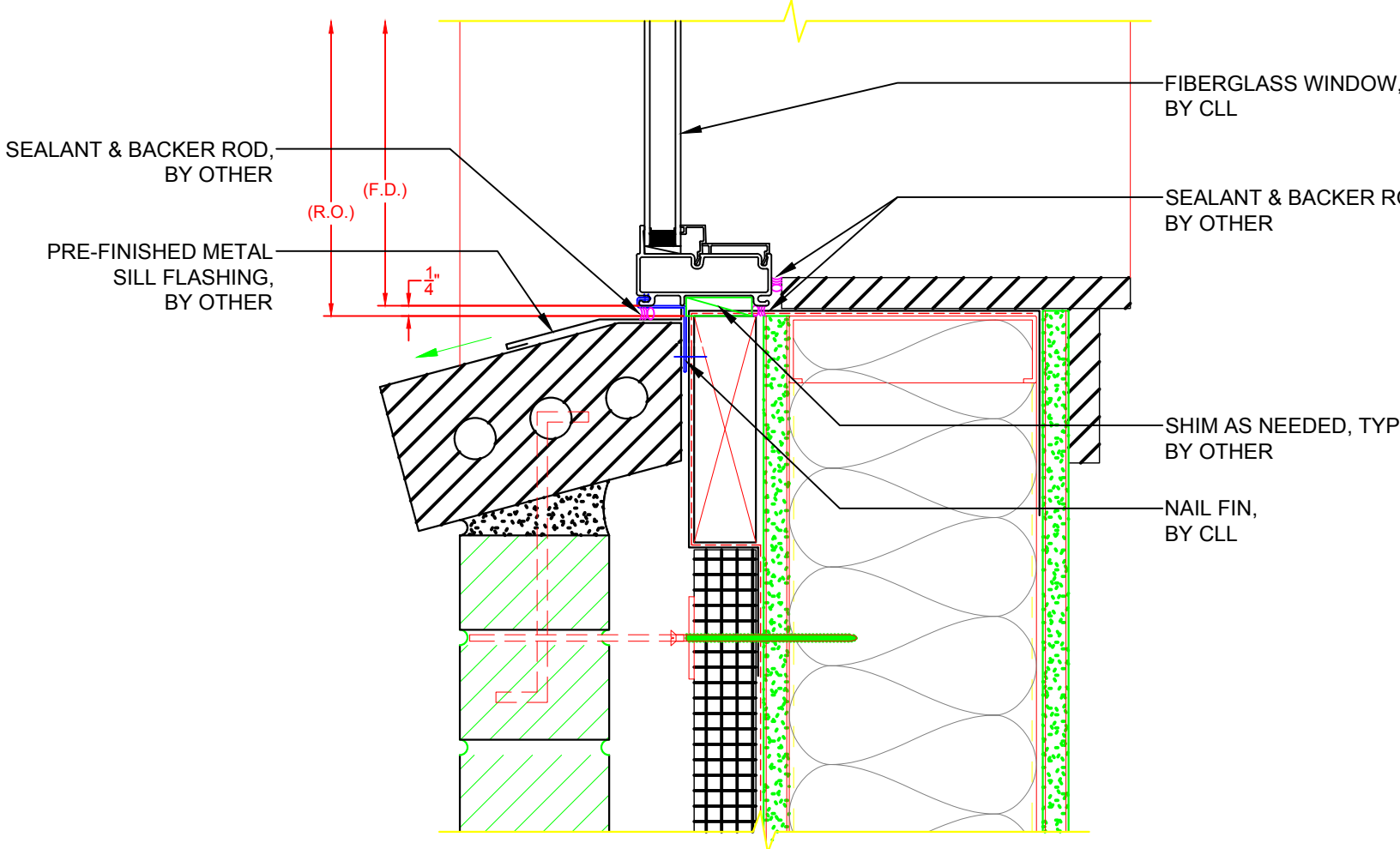
MULL. DETAIL - PICTURE / PICTURE - TYP.  
VERTICAL MULLS



MULL. DETAIL - PICTURE / PICTURE - TYP.  
HORIZONTAL MULLS




JAMB DETAIL - 6500 PICTURE WINDOW  
(W/ INSTALL THROUGH FRAME)



SILL DETAIL - 6500 PICTURE WINDOW  
(W/ RIGID NAIL FIN)

- \* NOTE:
- ALL DRAWINGS ARE FOR REFERENCE PURPOSES ONLY
  - ACTUAL INSTALLATION, FASTENERS, ETC. MAY VARY
  - AVB & SEALANT BY OTHER, PER LOCAL & INTERNATIONAL BUILDING CODES
  - ALL INSTALLATION SCREWS GOING INTO R.O. ARE BY OTHER
  - ALL SHIMS ARE BY OTHER

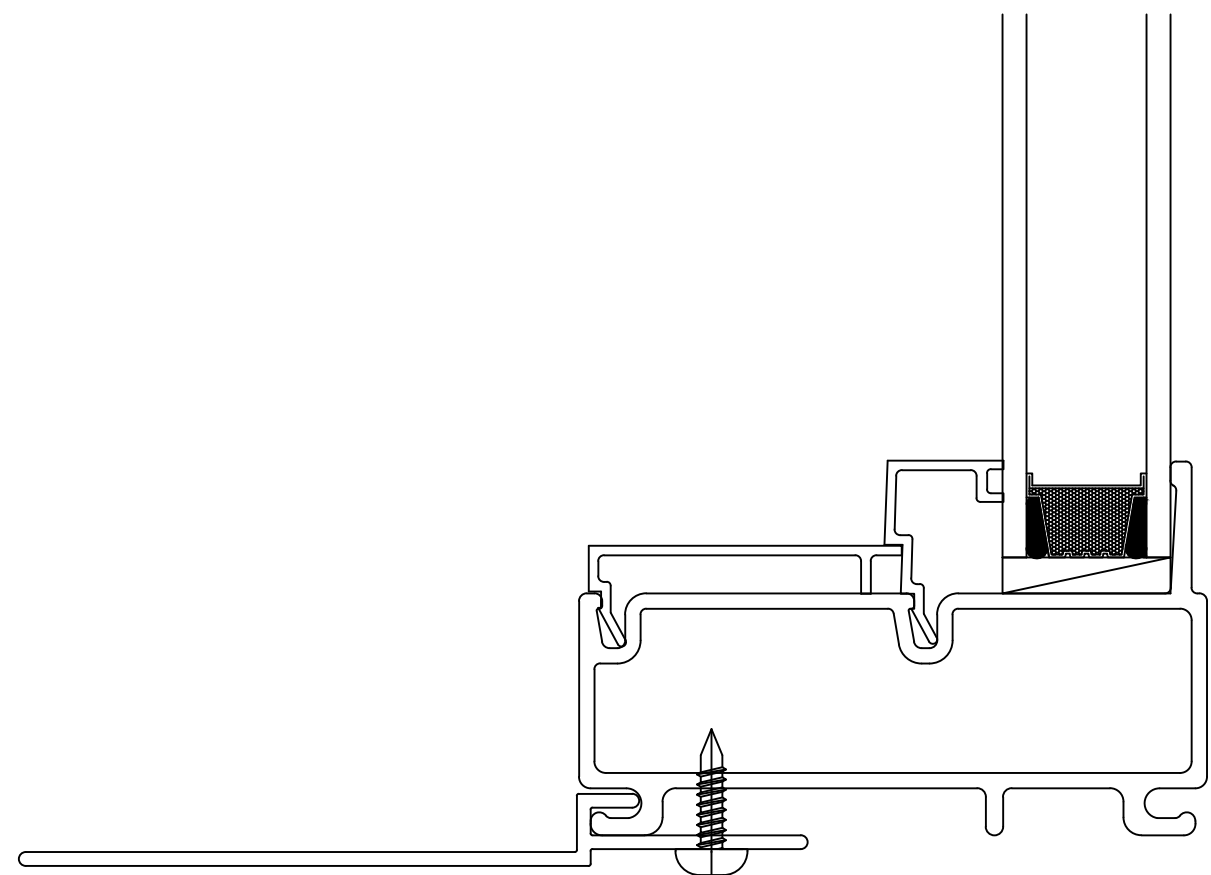
SEE PRODUCT SPECIFICATIONS PAGE FOR COMPLETE PRODUCT DESCRIPTION.

SERIES/CONFIGURATION:			 <div>COMFORT LINE LTD. 5500 ENTERPRISE BLVD. TOLEDO, OH 43612 419-729-8520</div>	
6500 SERIES PICTURE WINDOW				
DRAWING TYPE:			THIS DRAWING IS THE PROPERTY OF COMFORT LINE LTD. DESIGN CONCEPTS AND INFORMATION MAY NOT BE REPRODUCED USED OR DISCLOSED WITHOUT THE WRITTEN PERMISSION OF COMFORT LINE LTD.	
DETAIL WINDOW PROFILES				
			PROJECT: 6500 PICTURE	
			SCALE: 3" = 1' - 0"	
			DATE: 2/13/17	
DATE	REVISION	BY	QUOTE: #####	
			DRAWN BY: AJL	
			SHEET: SPW3	



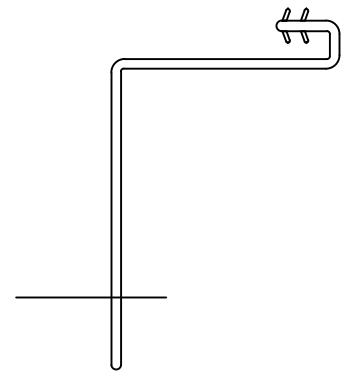
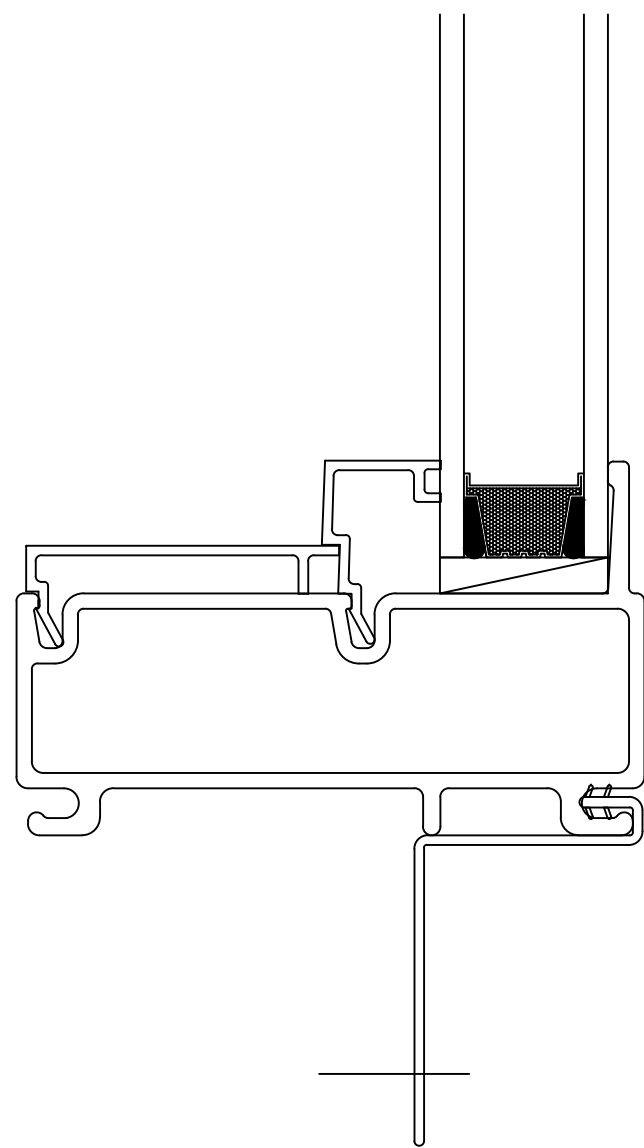
# 6500 SERIES PICTURE

(AVAILABLE ACCESSORIES)



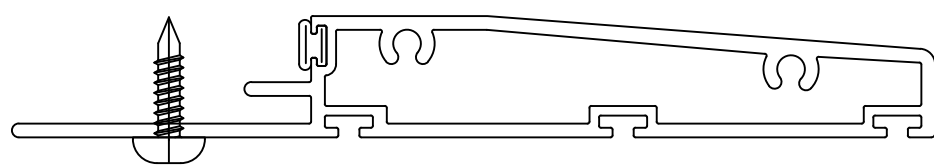
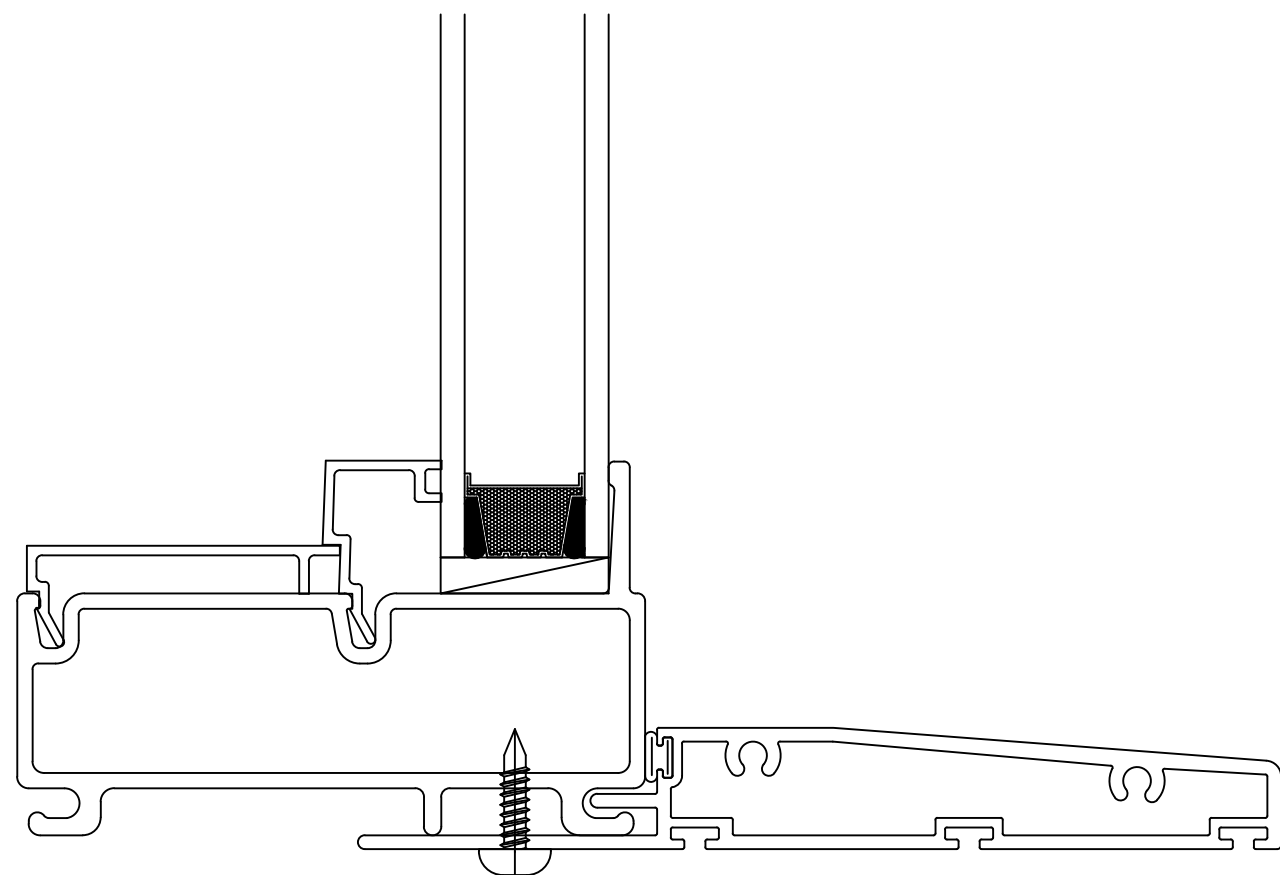
6500 PICTURE WINDOW  
W/ ANCHOR STRAP

#



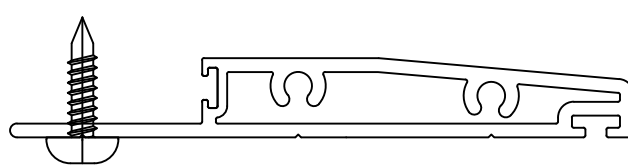
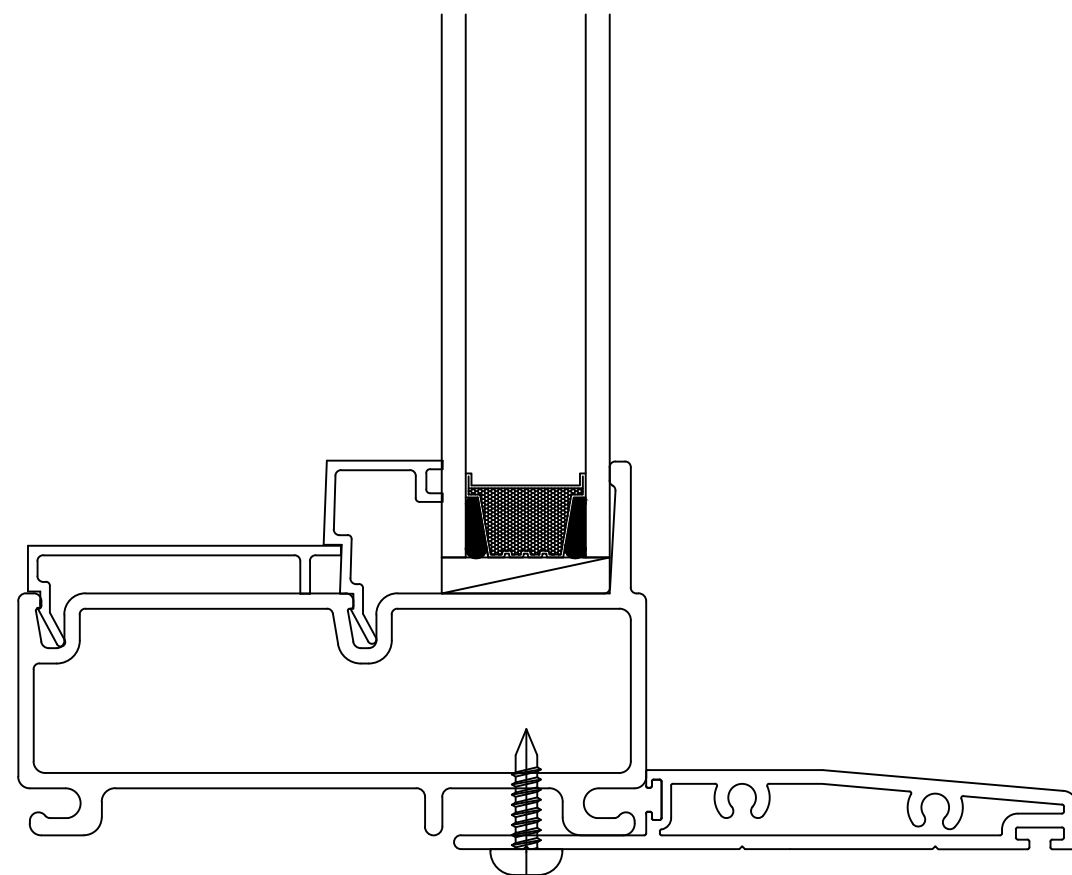
6500 PICTURE WINDOW  
W/ RIGID NAIL FIN

#



6500 PICTURE WINDOW  
W/ 3 1/4" PANNING

#




6500 PICTURE WINDOW  
W/ 2 1/4" PANNING

#

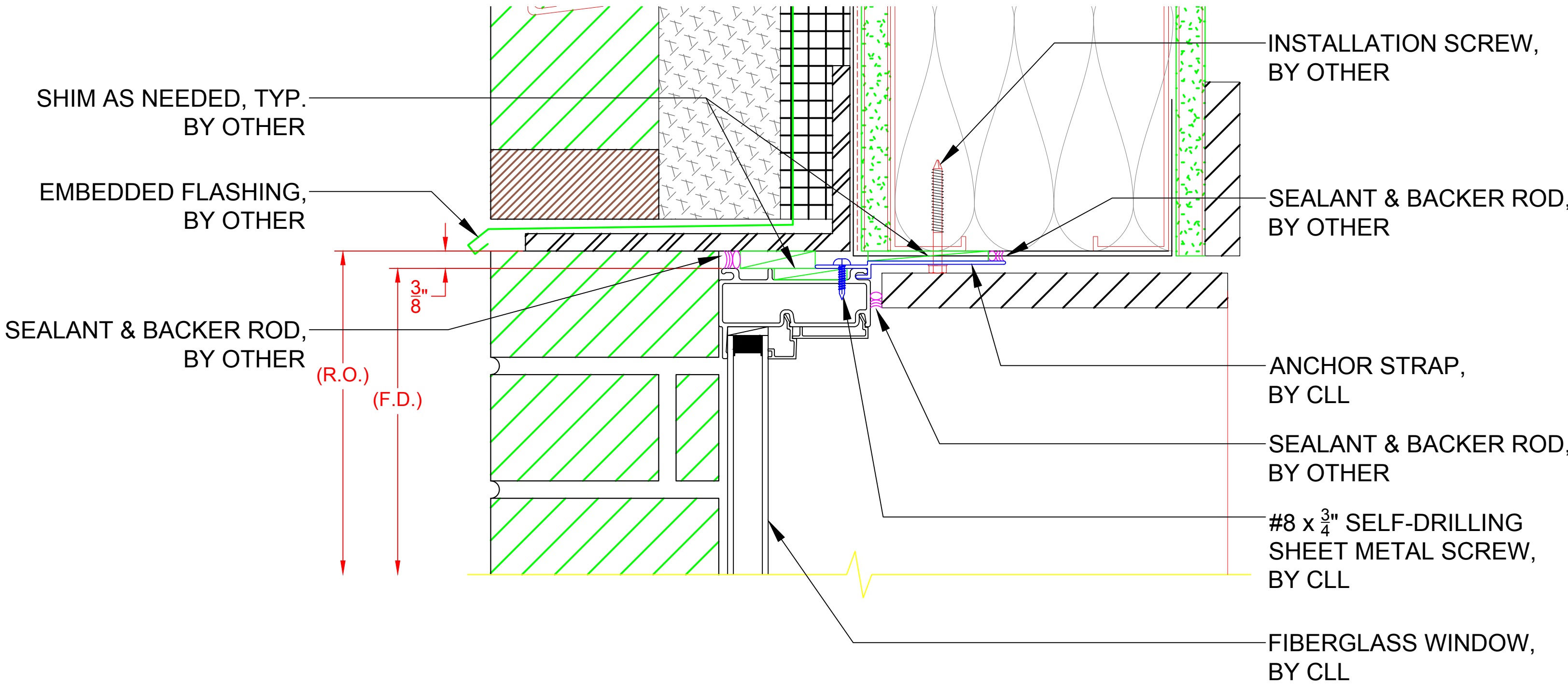
NOTE: - ACCESSORIES SHOWN ARE AVAILABLE OPTIONS FOR THE CURRENT WINDOW SERIES.  
- ALL ACCESSORIES ARE NOT AVAILABLE FOR EVERY WINDOW SERIES.

SEE PRODUCT SPECIFICATIONS PAGE FOR COMPLETE PRODUCT DESCRIPTION.

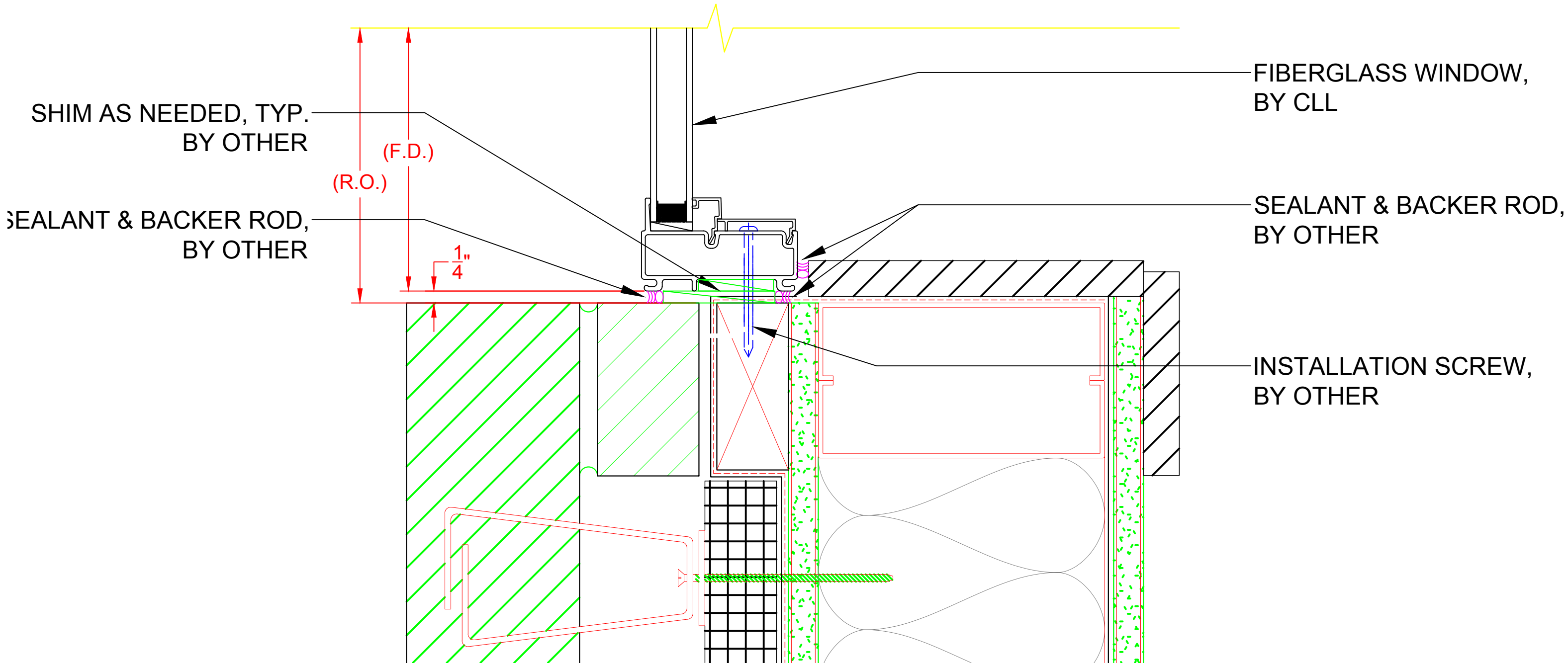
SERIES/CONFIGURATION:			 <div><b>FiberFrame</b>™ <b>Comfort Line</b>® <small>FIBERGLASS WINDOWS, PATIO DOORS, SUNROOMS &amp; STOREFRONT</small></div>	COMFORT LINE LTD.	
6500 SERIES PICTURE WINDOW				5500 ENTERPRISE BLVD.	
DRAWING TYPE:				TOLEDO, OH 43612	
PROFILE W/ ACCESSORIES			419-729-8520		
			THIS DRAWING IS THE PROPERTY OF COMFORT LINE LTD. DESIGN CONCEPTS AND INFORMATION MAY NOT BE REPRODUCED USED OR DISCLOSED WITHOUT THE WRITTEN PERMISSION OF COMFORT LINE LTD.		
			PROJECT:		6500 PICTURE
			SCALE:		1' - 0" = 1' - 0"
			DATE:		2/13/17
DATE	REVISION	BY	QUOTE:		####
			DRAWN BY:		AJL
			SHEET:		SPW4

# 6500 SERIES PICTURE

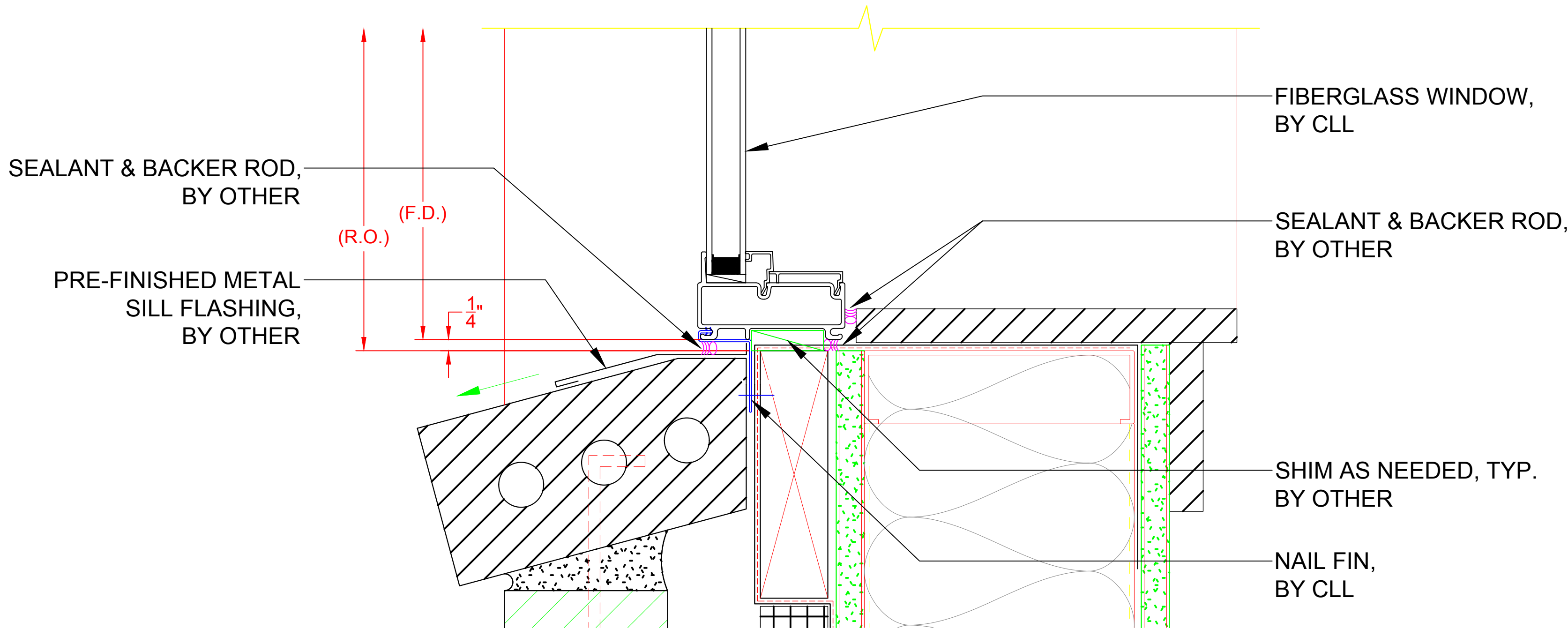
(INSTALLATION METHODS)



H1 HEAD DETAIL - 6500 PICTURE WINDOW (W/ ANCHOR STRAP)



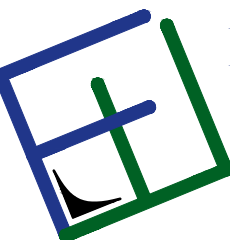
J1 JAMB DETAIL - 6500 PICTURE WINDOW (W/ INSTALL THROUGH FRAME)



S1 SILL DETAIL - 6500 PICTURE WINDOW (W/ RIGID NAIL FIN)

- \* NOTE:
- ALL DRAWINGS ARE FOR REFERENCE PURPOSES ONLY
  - ACTUAL INSTALLATION, FASTENERS, ETC. MAY VARY
  - AVB & SEALANT BY OTHER, PER LOCAL & INTERNATIONAL BUILDING CODES
  - ALL INSTALLATION SCREWS GOING INTO R.O. ARE BY OTHER
  - ALL SHIMS ARE BY OTHER

SEE PRODUCT SPECIFICATIONS PAGE FOR COMPLETE PRODUCT DESCRIPTION.


SERIES/CONFIGURATION:			<div><div><b>FiberFrame</b><sup>TM</sup> Comfort Line® <small>FIBERGLASS WINDOWS, PATIO DOORS, SUNROOMS &amp; STOREFRONT</small></div></div>			COMFORT LINE LTD.		
6500 SERIES PICTURE WINDOW						5500 ENTERPRISE BLVD.		
DRAWING TYPE:			THIS DRAWING IS THE PROPERTY OF COMFORT LINE LTD. DESIGN CONCEPTS AND INFORMATION MAY NOT BE REPRODUCED USED OR DISCLOSED WITHOUT THE WRITTEN PERMISSION OF COMFORT LINE LTD.			TOLEDO, OH 43612		
INSTALLATION EXAMPLES						419-729-8520		
			SCALE: 6" = 1' - 0"			PROJECT: 6500 PICTURE		
			DATE: 2/13/17			QUOTE: #####		
DATE	REVISION	BY	DRAWN BY: AJL			SHEET: SPW5		

(MULLING DETAIL)

## 8000 SERIES



SEE PRODUCT SPECIFICATIONS PAGE FOR COMPLETE PRODUCT DESCRIPTION.

SERIES/CONFIGURATION: 6500 SERIES PICTURE WINDOW			 FIBERGLASS WINDOWS, PATIO DOORS, SUNROOMS & STOREFRONT		COMFORT LINE LTD. 5500 ENTERPRISE BLVD. TOLEDO, OH 43612 419-729-8520	
DRAWING TYPE: MULLING SECTION DETAIL					THIS DRAWING IS THE PROPERTY OF COMFORT LINE LTD. DESIGN CONCEPTS AND INFORMATION MAY NOT BE REPRODUCED USED OR DISCLOSED WITHOUT THE WRITTEN PERMISSION OF COMFORT LINE LTD.	
			SCALE: 1' - 0" = 1' - 0"		PROJECT: 6500 PICTURE	
			DATE: 2/13/17		QUOTE: ####	
DATE	REVISION	BY	DRAWN BY: AJL		SHEET: SPW6	